

## EC type-examination certificate UK/0126/0126 Revision 17

Issued by

**NMO**  
**Notified Body Number 0126**

In accordance with the requirements of the Measuring Instruments Regulations 2016 (S.I. 2016 No. 1153) which implement, in the United Kingdom, Council Directive 2014/32/EU, this EU-type examination certificate has been issued to:

**Stanley Works Limited**  
**92 Moo 9 Wellgrow Industrial Estate**  
**Bangna-Trad Rd.,**  
**T. Bangwua, A. Bangpakong**  
**Chachoengsao 24180,**  
**Thailand**

in respect of: Material measure of length  
accuracy class: II / III  
nominal length and width: 3 m x 12.7 mm

The necessary data (principal characteristics, alterations, securing, functioning etc) for identification purposes, including alternative models and conditions (when applicable), are set out in the descriptive annex to this certificate.

This revision replaces previous versions of the certificate.

**Issue Date: 06 June 2018**  
**Valid Until: 01 October 2022**



**Grégory Glas**  
**Lead Technical Manager**  
*For and on behalf of the Head of Technical Services*



0135

# Descriptive Annex

## 1 REGULATIONS

The measuring instrument in respect of which this EU-type examination certificate has been issued is subject to the provisions and requirements of the Measuring Instruments Regulations 2016 (S.I. 2016 No. 1153) which implement, in the United Kingdom, Council Directive 2014/32/EU.

## 2 DESCRIPTION OF THE PATTERN

The pattern is a small composite measure. The blade, which is 3 m long with a nominal width of 12.7 mm, is made of steel and has a sliding hook at the free end. It has black and red markings on a yellow background protected by a clear film. The blade is graduated in millimetres throughout, on both edges; half-centimetres are also marked. The centimetre intervals are numbered consecutively throughout and the decimetre numbers are marked in red, or yellow on a red background. The first part of the blade is shown in the illustration (Figure 1). From revision 8 onwards the front part of the blade and end part of the blades is shown in figure 36

## 3 TECHNICAL DATA

- |     |                 |          |
|-----|-----------------|----------|
| (a) | Accuracy class: | II / III |
| (b) | Nominal length: | 3 m      |
| (c) | Scale interval: | 1 mm     |

## 4 INSCRIPTIONS

The following inscriptions are marked on the front face of the blade within the first 20 cm:

- |     |                                      |              |
|-----|--------------------------------------|--------------|
| (a) | Nominal length:                      | 3m           |
| (b) | Manufacturer's identification:       | STANLEY      |
| (c) | Class of accuracy:                   | II / III     |
| (d) | EC type approval certificate number: | UK/0126/0126 |

## 5 APPROVAL CONDITIONS

The certificate is issued subject to the following conditions.

### 5.1 Legends and inscriptions

**5.1.1** The following markings and inscriptions are durably and legibly marked onto the blade of the tape measure (Figure 1); and fulfil the requirements of Paragraph 9 of Annex I of the Directive 2014/32/EU

- 'CE' mark
- Supplementary metrology mark
- Notified Body number
- Accuracy class
- Manufacturers mark or name and postal address
- Certificate number
- Tractive force (if applicable)
- Reference temperature (if other than 20°C)

**5.1.2** The blade may be fitted into a Global style case as shown in the illustration (Figure 2) bearing the inscription "STANLEY" and identification no. 30-487. The case may also be fitted with a belt clip.

## 6 LOCATION OF MARKS

6.1 The inscriptions in section 4 together with the 'CE' marking, supplementary metrology marking and notified body number are printed on the blade near the beginning. An example of the markings is shown in Figure 1.

## 7 AUTHORISED ALTERNATIVES

7.1 Having alternative blade dimensions and case models as detailed in Table 1 below:

Nominal Length (m)	Nominal Width (mm)	Accuracy Class	Case Model	Case ID
5	19	II / III	Global	30-497
8	25.4	II / III	Global	30-457

Table 1

7.1.1 The cases may be marked, on the rear face, with Imperial measurement markings (inches and abbreviations) which are not an element of this certification.

7.1.2 Having the blade as described for case model 30-497 in table 1 above, but having black and red markings on a white background protected by a clear film with the alternative case model **STHT30034-8**

7.2 Having alternative models of steel blade as detailed in table 2, which have a single graduated bottom edge. It has black and red markings on a yellow background protected by a clear film. The blade is graduated in millimetres throughout; half-centimetres are also marked. The centimetre intervals are numbered consecutively from throughout and the decimetre numbers are more prominent. Each meter is numbered in red. The blade is terminated by a metal ring, which is attached to the blade by means of a riveted reinforcing strip which forms part of the first 10mm of the measure. The first part of the blade is shown in the illustration (Figure 3).

Nominal Length (m)	Nominal Width (mm)	Accuracy Class	Case Model	Case ID
10	9.5	II / III	Closed reel	34-102
20	9.5	II / III	Closed reel	34-105
30	9.5	II / III	Closed reel	34-108
20	9.5	II / III	FatMax	34-133
30	9.5	II / III	FatMax	34-134

Table 2

7.2.1 An example of the closed reel case design is shown in the illustration (Figure 4).

7.2.2 An example of the FatMax case design is shown in the illustration (Figure 5).

7.2.3 These cases may be fitted with any of the following:

- belt / belt loop clip.
- wrist /carrying strap.

**7.3** Having alternative models of fibreglass tapes as detailed in table 3. The tapes are coloured white with black markings The legends and inscriptions are printed in red. They are graduated on the top edge in 2 millimetre intervals. The centimetre intervals are numbered consecutively from 1 to 9 for each decimetre, this pattern is repeated throughout the blade. The number of centimetres is also numbered every decimetre throughout each meter. Identical scale markings and numbering is printed on the reverse side of the tape. These tapes are composite measures, fitted with a claw hook end which forms part of the first 40 mm of the measure and is attached to the tape by means of a riveted reinforcing strip. The first part of the blade is shown in the illustration (Figure 6).

<b>Nominal Length (m)</b>	<b>Nominal Width (mm)</b>	<b>Accuracy Class</b>	<b>Case Model</b>	<b>Case ID</b>
10	12.7	II / III	Closed case	34-295
20	12.7	II / III	Closed case	34-296
30	12.7	II / III	Closed case	34-297
50	12.7	II / III	Closed case	34-298
30	12.7	II / III	Open Frame	34-792
60	12.7	II / III	Open Frame	34-795

**Table 3**

**7.3.1** An example of the closed case design is shown in Figure 7.

**7.3.2** An example of the Open Frame design is shown in Figure 8.

**7.3.3** Having the fibreglass tapes, as detailed in table 3, coloured yellow with black markings.

**7.3.4** Having the fibreglass tapes, as detailed in table 3, but in an alternative designs of case as shown in Figure 33

**7.4** Having alternative models of fibreglass tapes as detailed in table 4. The tapes are coloured white with black markings on the front face and coloured yellow with black markings on the reverse face. The legends and inscriptions on both sides are printed in red. They are graduated on the top edge in 2 millimetre intervals. The centimetre intervals are numbered consecutively from 1 to 9 for each decimetre, this pattern is repeated throughout the blade. The number of centimetres is also numbered every decimetre throughout each meter. Identical scale markings and numbering is printed on the reverse side of the tape. These tapes are composite measures, fitted with a claw hook end which forms part of the first 40 mm of the measure and is attached to the tape by means of a riveted reinforcing strip. A pull loop is riveted to the sides of the claw hook end, but is not included in the nominal length. The first part of the tape is shown in the illustration (Figure 9).

<b>Nominal Length (m)</b>	<b>Nominal Width (mm)</b>	<b>Accuracy Class</b>	<b>Case/reel Model</b>	<b>Case ID</b>
30	19	II / III	FatMax	34-814
60	19	II / III	FatMax	34-824

**Table 4**

**7.4.1** An example of the open frame FatMax design is shown in the illustration (Figure 10).

**7.5** Having alternative models of fibreglass tapes as detailed in table 5. The tapes are coloured yellow with black markings on both sides. The legends and inscriptions on both sides are printed in red. They are graduated on the top edge in 2 millimetre intervals. The centimetre intervals are numbered consecutively from 1 to 9 for each decimetre, this pattern is repeated throughout the blade. The number of centimetres is also numbered every decimetre throughout each meter. Identical scale markings and numbering is printed on the reverse side of the tape. These tapes are composite measures, fitted with a claw hook end which forms part of the first 40 mm of the measure and is attached to the tape by means of a riveted reinforcing strip. A pull loop is riveted to the sides of the claw hook end, but is not included in the nominal length. The first part of the tape is shown in the illustration (Figure 11).

Nominal Length (m)	Nominal Width (mm)	Accuracy Class	Case Model	Case ID
30	12.7	II / III	Power Winder	34-772
60	12.7	II / III	Power Winder	34-775
100	12.7	II / III	Power Winder	34-777

**Table 5**

**7.5.1** An example of the open frame Power Winder design is shown in the illustration (Figure 12)

**7.6** Having alternative models of steel blade as detailed in table 6. The blades have black and red markings on a yellow background protected by a clear film, and have a sliding hook at the free end. The blade is graduated in millimetres throughout, on both edges; half-centimetres are also marked. The centimetre intervals are numbered consecutively throughout and the decimetre numbers are marked in yellow on a red background. The first part of the blade is shown in the illustration (Figure 13).

Nominal Length (m)	Nominal Width (mm)	Accuracy Class	Case Model	Case ID
3	19	II / III	Micro PowerLock	33-522
5	19	II / III	Micro PowerLock	33-552

**Table 6**

**7.6.1** Examples of the closed case design is shown in the illustration (Figure 14).

**7.6.2** The cases may be marked, on the rear face, with Imperial measurement markings (inches and abbreviations) which are not an element of this certification.

**7.6.3** The cases may also be fitted with a belt clip.

**7.7** Having alternative models of steel blade as detailed in table 7. The blades have black and red markings on a yellow background protected by a clear film, and have a sliding hook at the free end. The blade is graduated in millimetres throughout, on both edges; half-centimetres are also marked. The centimetre intervals are numbered consecutively throughout and the decimetre numbers are marked in red, or yellow on a red background. The first part of the blades are shown in the illustration (Figure 15).

Nominal Length (m)	Nominal Width (mm)	Accuracy Class	Case Model	Case ID
3	12.5	II / III	Tylon	30-687
5	19	II / III	Tylon	30-697
8	25	II / III	Tylon	30-657

**Table 7**

**7.7.1** Examples of the closed case design is shown in the illustration (Figure 16).

**7.7.2** The cases may be marked, on the rear face, with Imperial measurement markings (inches and abbreviations) which are not an element of this certification.

**7.7.3** The cases may also be fitted with a belt clip.

**7.8** Having alternative models of steel blade as detailed in table 8. The blades have black and red markings on a yellow background protected by a clear film, and have a sliding hook at the free end. The blade is graduated in millimetres throughout, on both edges; half-centimetres are also marked. The centimetre intervals are numbered consecutively throughout and the decimetre numbers are marked in yellow on a red background. The first part of the blades are shown in the illustration (Figure 17).

<b>Nominal Length (m)</b>	<b>Nominal Width (mm)</b>	<b>Accuracy Class</b>	<b>Case Model</b>	<b>Case ID</b>
3	19	II / III	Max	33-918
5	19	II / III	Max	33-921

**Table 8**

**7.8.1** Examples of the closed case design are shown in the illustration (Figure 18).

**7.8.2** The cases may be marked, on the rear face, with Imperial measurement markings (inches and abbreviations) which are not an element of this certification.

**7.8.3** The cases may also be fitted with a belt clip.

**7.9** Having alternative models of steel blade as detailed in table 9. The blades have black and red markings on a yellow background protected by a clear film, and have a sliding hook with a fixed magnetic attachment at the free end. The blade is graduated in millimetres throughout, on both edges; half-centimetres are also marked. The centimetre intervals are numbered consecutively throughout and the decimetre numbers are marked in yellow on a red background. The first part of the blades are shown in the illustration (Figure 19).

<b>Nominal Length (m)</b>	<b>Nominal Width (mm)</b>	<b>Accuracy Class</b>	<b>Case Model</b>	<b>Case ID</b>
5	28.5	II / III	Max	33-958
8	28.5	II / III	Max	33-959

**Table 9**

**7.9.1** Examples of the closed case design is shown in the illustration (Figure 20).

**7.9.2** The cases may be marked, on the rear face, with Imperial measurement markings (inches and abbreviations) which are not an element of this certification.

**7.9.3** The cases may also be fitted with a belt clip.

**7.10** Having alternative models of steel blade as detailed in table 10. The blades have black and red markings on a yellow background protected by a clear film, and have a sliding hook at the free end. The blade is graduated in millimetres throughout, on both edges; half-centimetres are also marked. The centimetre intervals are numbered consecutively throughout and the decimetre numbers are marked in red, or yellow on a red background. The first part of the blades are shown in the illustration (Figure 21).

Nominal Length (m)	Nominal Width (mm)	Accuracy Class	Case Model	Case ID
3	12.5	II / III	PowerLock	33-218
3	12.5	II / III	PowerLock CLASSIC	33-238
3	19	II / III	PowerLock CLASSIC	33-041

**Table 10**

**7.10.1** Examples of the closed case design are shown in the illustration (Figure 22).

**7.10.2** The cases may be marked, on the rear face, with Imperial measurement markings (inches and abbreviations) which are not an element of this certification.

**7.10.3** The cases may also be fitted with a belt clip.

**7.11** Having alternative models of steel blade as detailed in table 11. The blades have black and red markings on a white or yellow background protected by a clear film and have a sliding hook at the free end. The blade is graduated in millimetres throughout on both edges; centimetres and half-centimetres are also marked. The centimetre intervals are numbered every decimetre throughout and the centimetre numbers are marked every decimetre in red. The first part of the blade is shown in the illustration. (Figure 23).

Nominal Length (m)	Nominal Width (mm)	Accuracy Class	Case Model	Case ID
3	13	II / III	Tough Case (ABS)	30-122-8
5	19	II / III	Tough Case (ABS)	30-123-8
8	25	II / III	Tough Case (ABS)	30-129-8
3	13	II / III	Tough Case (ABS+TPR)	30-130-8
5	19	II / III	Tough Case (ABS+TPR)	30-132-8
8	25	II / III	Tough Case (ABS+TPR)	30-141-8

**Table 11**

**7.11.1** Examples of the closed case designs are shown in the illustration (Figures 25 and 26).

**7.11.2** The cases may be marked, on the rear face, with Imperial measurement markings (inches and abbreviations) which are not an element of this certification.

**7.11.3** The cases may also be fitted with a belt clip.

**7.12** Having alternative models of steel blade as detailed in table 12. The blades have black and red markings on a white or yellow background protected by a clear film, and have a sliding hook attachment at the free end. The blade is graduated in millimetres throughout on the bottom edge; half-centimetres are also marked. The centimetre intervals are numbered every decimetre throughout and the centimetre numbers are marked every decimetre in red. The top edge has an imperial scale as supplementary marking and is not an element of this certificate. The first part of the blade is shown in Figure 24.

Nominal Length (m / ft)	Nominal Width (mm)	Accuracy Class	Case Model	Case ID
3 / 10	13	II / III	Tough Case (ABS)	30-148-8
5 / 16	19	II / III	Tough Case (ABS)	30-151-8
8 / 26	25	II / III	Tough Case (ABS)	30-157-8
3 / 10	13	II / III	Tough Case (ABS+TPR)	30-165-8

5 / 16	19	II / III	Tough Case (ABS+TPR)	30-167-8
8 / 26	25	II / III	Tough Case (ABS+TPR)	30-176-8

**Table 12**

**7.12.1** Examples of the closed case design is shown in the illustration (Figures 25 and 26).

**7.12.2** The cases may be marked, on the rear face, with Imperial measurement markings (inches and abbreviations) which are not an element of this certification.

**7.12.3** The cases may also be fitted with a belt clip.

**7.12.4** Having the additional marking  as shown in Figure 24.

**7.13** Having alternative models of steel blade as detailed in table 13. The blades have black and red markings on a yellow background protected by a clear film, and have a sliding hook at the free end. The blade is graduated in millimetres throughout, on both edges; half-centimetres are also marked. The centimetre intervals are numbered consecutively throughout and the decimetre numbers are marked in yellow on a red background. The first part of the blades are shown in the illustration (Figure 27).

Nominal Length (m)	Nominal Width (mm)	Accuracy Class	Case Model	Case ID
3	19	II / III	Grip	33-559
5	28.5	II / III	Grip	33-561
8	28.5	II / III	Grip	33-566

**Table 13**

**7.13.1** Examples of the closed case design is shown in the illustration (Figure 28).

**7.13.2** The cases may be marked, on the rear face, with Imperial measurement markings (inches and abbreviations) which are not an element of this certification.

**7.13.3** The cases may also be fitted with a belt clip.

**7.14** Having an alternative model of steel blade as detailed in table 14. The blade has black and red markings on a yellow background protected by a clear film, and has a sliding hook at the free end. The blade is graduated in millimetres throughout, on both edges; half-centimetres are also marked. The centimetre intervals are numbered consecutively throughout and the decimetre numbers are marked in red, or yellow on a red background. The first part of the blade are shown in the illustration (Figure 29).

Nominal Length (m)	Nominal Width (mm)	Accuracy Class	Case Model	Case ID
2	12.7	II / III	Fatmax keychain	33-856

**Table 14**

**7.14.1** An example of the closed case design is shown in the illustration (Figure 30).


**7.14.2** The case is fitted with a keychain.



**7.15** Having alternative models of steel blade as detailed in table 15. The blades have black and red markings on a white or yellow background protected by a clear film, and have a sliding hook attachment at the free end. The blade is graduated in millimetres throughout on the bottom edge; half-centimetres are also marked. The centimetre intervals are numbered every decimetre throughout and the centimetre numbers are marked every decimetre in red. The top edge has an imperial scale as supplementary marking and is not an element of this certificate. The first part of the blade is shown in Figure 31. Examples of the dual scale case markings are shown in Figure 32

Nominal Length (m / ft)	Nominal Width (mm)	Accuracy Class	Case Model	Case ID
3/10	13	II/III	TYLON	30-686
3/10	13	II/III	LEVER LOCK	30-808
3/10	13	II/III	POWERLOCK	33-203
5/16	19	II/III	GLOBAL	30-496
5/16	19	II/III	TYLON	30-696
5/16	19	II/III	POWER LOCK	33-158
5/16	19	II/III	LEVER LOCK	30-815
5/16	19	II/III	MICRO POWERLOCK	33-553
8/26	25	II/III	GLOBAL	30-456
8/26	25	II/III	TYLON	30-656
8/26	25	II/III	LEVER LOCK	30-824

**Table 15**

**7.16** Having an alternative models, as detailed in Table 16 below, with the manufacturer's alternative identification mark , which is the ID of either FACOM or USAG brand tape measures, marked on the front face of the blade within the first 20 cm, in place of STANLEY (Figure 34).

Nominal Length (m / ft)	Nominal Width (mm)	Accuracy Class	Case Model	Case ID
3	19	II/III	FACOM Tape Rule	897A.319
3/10	19	II/III	FACOM Tape Rule	897A.319ME
5	28	II/III	FACOM Tape Rule	897A.528
5/16	28	II/III	FACOM Tape Rule	897A.528ME
8	28	II/III	FACOM Tape Rule	897A.828
8/26	28	II/III	FACOM Tape Rule	897A.828ME
3	19	II/III	USAG Tape Rule	9810036
5	28	II/III	USAG Tape Rule	9810037
8	28	II/III	USAG Tape Rule	9810038


**Table 16**

**7.16.1** The cases are marked, on the rear face, with Imperial measurement markings (inches and abbreviations) which are not an element of this certification.

**7.17** Having an alternative model, as detailed in Table 16 below, with the manufacturer's alternative identification of DeWALT marked on the front face of the blade within the first 20 cm, in place of STANLEY.

Nominal Length (m) / (ft)	Nominal Width (mm)	Class	Case Model	Case ID	Figure No.
8 / 26	28.5	II/III	DeWALT Tape	DWHT36027	35

**Table 16**

**7.18** Having the following alternative models (metric/imperial and metric only), with the manufacturer’s alternative identification of DeWALT marked on the front face of the blade within the first 20 cm , and shown as  (Figure 37).

This mark can be used to identify Stanley, DeWalt, FACOM and USAG.

Nominal length	Nominal width	Accuracy class	Case model	Case ID
30 m / 100 ft	9.5 mm	II	DeWalt	DWHT0-34144
30 m	9.5 mm	II	DeWalt	DWHT0-34093

**Table 17**

The blades are fitted with a “claw hook” type; the cases have no dimensions (see Figure 38)

**7.19** Having alternative models of steel blade as detailed in table 18. The blades are as described in section 2. The blades are fitted with cases bearing no dimensions (Figure 39).

Nominal length	Nominal width	Accuracy class	Case model	Case ID
3m	12 mm	II	Expert	E140105
5m	19 mm	II	Expert	E140106

**Table 18**

**7.20** Having alternative models of steel blade as detailed in table 19. The blades are as described in section 2, but with the scale graduations marked on the front and rear face (Figure 40). The hook end incorporates a removable magnetic end which fixes onto the rivets of the hook end. The blades are fitted with cases (Figure 41) bearing Imperial dimension marking (inches) which are not subject to this certification.

Nominal length (m)	Nominal width (mm)	Accuracy class	Case model	Case ID
3	19	II/III	Stanley Max	STHT0-36121
5	25.4	II/III	Stanley Max	STHT0-36117
8	25.4	II/III	Stanley Max	STHT0-36118

**Table 19**

**7.21** Having alternative models of steel blade as detailed in table 20. The blades are as described in section 2. The blades are fitted with cases bearing no dimensions.

Nominal length (m)	Nominal width (mm)	Accuracy class	Case model	Case ID
3	12.7	II/III	Global Tape	30-487
5	19	II/III	Power Lock Tape	STHT33194-8
8	25.4	II/III	Power Lock Tape	STHT33168-8

**Table 20**

**7.22** Having alternative models of steel blade as detailed in table 21. The blades have black and red markings on a white or yellow background protected by a clear film, and have a sliding hook attachment at the free end. The blade is graduated in millimetres throughout on the top and bottom edges; half-centimetres are also marked. The centimetre intervals are numbered every decimetre throughout and the centimetre numbers are marked every decimetre in yellow surrounded by a red rectangle. The first part of the blade and examples of the dual scale case markings are shown in Figure 42.

Nominal length (m)	Nominal width (mm)	Accuracy class	Case model	Case ID
5	32	II/III	FATMAX	33-720
8	32	II/III	FATMAX	33-728

**Table 21**

**7.23** Having alternative models of steel blade as detailed in table 22. The blades have black and red markings on a white or yellow background protected by a clear film, and have a sliding hook attachment at the free end. The blade is graduated in millimetres throughout on the bottom edge; half-centimetres are also marked. The centimetre intervals are numbered every decimetre throughout and the centimetre numbers are marked every decimetre in red. The top edge has an imperial scale as supplementary marking and is not an element of this certificate. The first part of the blade and examples of the dual scale case markings are shown in Figure 43. The blades are fitted with cases bearing no dimensions.

Nominal length (m/ft)	Nominal width (mm)	Accuracy class	Case model	Case ID
5/16	32	II/III	FATMAX	33-719
8/26	32	II/III	FATMAX	33-726

**Table 22**

**7.24** Having alternative models of steel blade as detailed in table 23. The blades have black and red markings on a white or yellow background protected by a clear film, and have a sliding hook attachment at the free end. The blade is graduated in millimetres throughout on the top and bottom edges; half-centimetres are also marked. The centimetre intervals are numbered every decimetre throughout and the centimetre numbers are marked every decimetre in yellow surrounded by a red rectangle. The first part of the blade and examples of the dual scale case markings are shown in Figure 44. The blades are fitted with cases bearing no dimensions.

Nominal length (m)	Nominal width (mm)	Accuracy class	Case model	Case ID
3	12.7	II/III	Dual Lock	STHT36802-0
5	19	II/III	Dual Lock	STHT36803-0
8	25.4	II/III	Dual Lock	STHT36804-0

**Table 23**

**7.25** Having alternative models of steel blade as detailed in table 24. The blades have black and red markings on a white or yellow background protected by a clear film, and have a sliding hook attachment at the free end. The blade is graduated in millimetres throughout on the bottom edge; half-centimetres are also marked. The centimetre intervals are numbered every decimetre throughout and the centimetre numbers are marked every decimetre in red. The top edge has an imperial scale as supplementary marking and is not an element of this certificate. The first part of the blade and examples of the dual scale case markings are shown in Figure 45. The blades are fitted with cases bearing no dimensions.

Nominal length (m/ft)	Nominal width (mm)	Accuracy class	Case model	Case ID
3/10	12.7	II/III	Dual Lock	STHT36805-0
5/16	19	II/III	Dual Lock	STHT36806-0
8/26	25.4	II/III	Dual Lock	STHT36807-0

**Table 24**

**7.26** Having an alternative model of steel blade as detailed in table 25, with the manufacturer's alternative identification of DeWALT marked on the front face of the blade. The blade is marked with black and red markings on a white or yellow background protected by a clear film, and has a sliding hook attachment at the free end. The front face of the blade is graduated in millimetres throughout on the bottom edge; half-centimetres are also marked. The centimetre intervals are numbered every decimetre throughout and the centimetre numbers are marked every decimetre in red. The top edge has an imperial scale as supplementary marking and is not an element of this certificate..

The first part of the blade and examples of the dual scale case markings are shown in Figure 46. The blades are fitted with cases bearing no dimensions.

Nominal length (m)	Nominal width (mm)	Accuracy class	Case model	Case ID
3	12.7	II/III	POCKET TAPE	DWHT33028-1

**Table 25**

**7.27** Having alternative models of steel blade as detailed in table 26, which are dual marked with graduations on both the front and rear face, and have black and red markings on a white or yellow background, protected by a clear film. The blades are fitted with a sliding hook attachment at the free end. The front and rear face of the blade are graduated in millimetres throughout on the bottom edge; half-centimetres are also marked. The centimetre intervals are numbered every decimetre throughout and the centimetre numbers are marked every decimetre in red. The top edge on both the front and rear face has an imperial scale as supplementary marking and is not an element of this certificate.

The first part of the blade and examples of the dual scale case markings are shown in Figure 47. The blades are fitted with cases bearing no dimensions.

Nominal length (m/ft)	Nominal width (mm)	Accuracy class	Case model	Case ID
5/16	25.4	II/III	STANLEY MAX	STHT0-36119
8/26	25.4	II/III	STANLEY MAX	STHT0-36120

**Table 26**

7.28 Having alternative case models as detailed in table 27.

Nominal length (m/ft)	Nominal width (mm)	Accuracy class	Case model	Case ID	Figure
5/16	32	II/III	FATMAX	FMHT36090	Figure 43
8/26	32	II/III	FATMAX	FMHT36091	Figure 43
5/16	28.5	II/III	DeWALT	DWHT36092	Figure 48
Nominal length (m)	Nominal width (mm)	Accuracy class	Case model	Case ID	Figure
3	12.7	II/III	Pocket TAPE	DWHT36098	Figure 46

Table 27


7.29 Having alternative case models as detailed in table 28.

Nominal length (m)	Nominal width (mm)	Accuracy class	Case model	Case ID	Figure
3	12.7	II/III	Pocket TAPE	100.313	Figure 49

Table 28

7.30 Having alternative case models as detailed in table 29, with the manufacturer's



alternative identification mark , which is the ID of STANLEY, marked on the front face of the blade within the first 20 cm, in place of STANLEY.

Nominal length (m)	Nominal width (mm)	Accuracy class	Case model	Case ID	Figure
3	12.7	II/III	Pocket TAPE	STHT36139-9	Figure 50

Table 29

7.31 Having alternative case models as detailed in table 30.

Nominal length (m)	Nominal width (mm)	Accuracy class	Case model	Case ID	Figure
5	32	II / III	FATMAX AUTOLOCK	XTHT0-33671	Figure 51
5/16'	32	II / III	FATMAX AUTOLOCK	XTHT0-33503	Figure 51
8	32	II / III	FATMAX AUTOLOCK	XTHT0-33501	Figure 51
8/26'	32	II / III	FATMAX AUTOLOCK	XTHT0-33504	Figure 51

Table 30

**7.32** Having alternative models of steel blade as detailed in table 31. The 10m/33ft blade is dual marked with Metric graduations on the lower front face and Imperial graduations on the upper front face, and the 10m blade is dual marked with Metric graduations on both the lower and upper front face. The blades have black and red markings on a white or yellow background, protected by a clear film. The blades are fitted with a sliding hook attachment at the free end.

The front face of the blade is graduated in millimetres throughout on the bottom edge; half-centimetres are also marked. The centimetre intervals are numbered every decimetre throughout and the centimetre numbers are marked every decimetre in red. Where the top edge on the front face has an imperial scale as supplementary marking, this is not an element of this certificate.

The first part of the blade and examples of the dual scale case markings are shown in Figure 52. The blades are fitted with cases bearing no dimensions.

Nominal length (m/ft)	Nominal width (mm)	Accuracy class	Case model	Case ID	Figure
10/33'	32	II/III	FATMAX TAPE	0-33-805	Figure 52
10	32	II/III	FATMAX TAPE	0-33-811	Figure 52

**Table 31**

**7.33** Having alternative case models as detailed in table 32. Examples of the cases are shown in Figure 53. The blades are fitted with cases bearing no dimensions.

Nominal length (m/ft)	Nominal width (mm)	Accuracy class	Case model	Case ID	Figure
5	32	II/III	FATMAX TAPE MAGNETIC	FMHT0- 33864	Figure 53
8	32	II/III	FATMAX TAPE MAGNETIC	FMHT0- 33868	Figure 53

**Table 32**

## 8 ILLUSTRATIONS

Note - Blade illustrations are examples only and may not show all required markings.

- |           |   |           |   |
|-----------|---|-----------|---|
| Figure 1  | Examples of the steel blade   | Figure 2  | Example of Case Model                       |
| Figure 3  | Example of the alternative steel blade.   | Figure 4  | Examples of Case Model - Closed Reel        |
| Figure 5  | Examples of Case Model - Fat Max  | Figure 6  | Example of the fibreglass tape & hook end.  |
| Figure 7  | Examples of Case Model - closed case.   | Figure 8  | Examples of Reel Model - open frame.        |
| Figure 9  | Example of the alternative fibreglass tape with hook end and pull loop (19 mm width). | Figure 10 | Examples of Reel Model - FatMax.            |
| Figure 11 | Example of the alternative fibreglass tape with hook end and pull loop (12.7mm width) | Figure 12 | Examples of Reel Model - Power Winder       |
| Figure 13 | Example of the Micro PowerLock alternative steel blade.                               | Figure 14 | Example of the case model - Micro PowerLock |

Figure 15	Examples of the Tylon alternative steel blade.	Figure 16	Examples of the Tylon case model.
Figure 17	Examples of the Max alternative steel blade.	Figure 18	Examples of the Max case model.
Figure 19	Examples of the magnetic hook alternative steel blade.	Figure 20	Examples of the Max + Magnetic Hook case model.
Figure 21	Examples of the PowerLock / PowerLock CLASSIC alternative steel blades.	Figure 22	Examples of the PowerLock / PowerLock CLASSIC case models
Figure 23	Example of the blades for Tough Cases (ABS) and (ABS+TPR)	Figure 24	Example of the dual scale blades for Tough Cases (ABS) and (ABS+TPR)
Figure 25	Example of Tough Case (ABS)	Figure 26	Example Tough Case (ABS+TPR)
Figure 27	Example of blades for Grip style case	Figure 28	Example of case style GRIP.
Figure 29	Example of Fatmax keychain blade	Figure 30	Example of case style 33-856
Figure 31	Example of the dual scale blades for Global, Tylon, Power Lock, and Lever Lock	Figure 32	Example of the dual scale case markings for Global, Tylon, Power Lock, and Lever Lock
Figure 33	Examples of alternative Fibreglass cases	Figure 34	USAG and FACOM Examples
Figure 35	DeWalt example	Figure 36	Revision 8 onwards Blade examples
Figure 37	Imperial markings with alternative manufacturer's mark	Figure 38	DeWalt case
Figure 39	Expert case	Figure 40	Example of Double sided blade
Figure 41	Example of Stanley Max case	Figure 42	Example of the FATMAX blade and case (Metric)
Figure 43	Example of the FATMAX blade and case (Metric/Imperial)	Figure 44	Examples of the Dual Lock blade and case (Metric)
Figure 45	Examples of the Dual Lock blade and case (Metric/Imperial)	Figure 46	Examples of the Dewalt marked blade
Figure 47	Examples of the Stanley Dual sided blade	Figure 48	DeWalt example (5m)
Figure 49	Examples of the FACOM case and blade marking (3m)	Figure 50	Example of STANLEY SW case and blade marking (3m)
Figure 51	Example of STANLEY FATMAX AUTOLOCK case and blade marking	Figure 52	Examples of STANLEY FATMAX TAPE case and blade marking (10m/33ft and 10m)
Figure 53	Examples of STANLEY FATMAX TAPE MAGNETIC case		

## CERTIFICATE HISTORY

ISSUE NO.	DATE	DESCRIPTION
UK/0126/0126	02 October 2012	Type approval first issued.
UK/0126/0126 Revision 1	08 November 2012	<u>Revision 1 Issued:</u> Addition of section 7.8, including table 8, Figures 17 and 18. Addition of section 7.9, including table 9, Figures 19 and 20. Addition of section 7.10, including table 10, Figures 21 and 22.
UK/0126/0126 Revision 2	02 September 2014	<u>Revision 2 Issued:</u> Addition of sections: 7.11, 7.12 and 7.13 Addition of figures: 23, 24, 25, 26, 27 and 28.
UK/0126/0126 Revision 3	28 October 2014	<u>Revision 3 Issued:</u> Addition of section: 7.13.4 Addition of figure: 29
UK/0126/0126 Revision 4	01 December 2014	<u>Revision 4 Issued:</u> Replaced blade graphics image in figure 24. Removed original figure 29. Section: 7.13.4 moved to section 7.12.4 Addition of section 7.14 Addition of new figures: 29 and 30.
UK/0126/0126 Revision 5	26 June 2015	<u>Revision 5 Issued:</u> Table 3: 50m Tape added Addition of section 7.3.4 and 7.15 Addition of new figures: 31, 32 and 33.
UK/0126/0126 Revision 6	17 December 2015	<u>Revision 6 Issued:</u> Addition of sections 7.1.3 and 7.16
UK/0126/0126 Revision 7	03 February 2016	<u>Revision 7 Issued:</u> Addition of section 7.1.17 and figure 34 updated.
UK/0126/0126 Revision 8	06 July 2016	<u>Revision 8 Issued:</u> Entire document reference to Council Directive 2014/32/EU replaces old reference. Figure 38 added to reflect markings requirements and graphic change on Metric-English Figure 34 updated
UK/0126/0126 Revision 9	14 November 2016	<u>Revision 9 Issued:</u> Sections 7.18 and 7.19 added.



UK/0126/0126 Revision 10	26 April 2017	<u>Revision 10 Issued:</u> Addition of: <ul style="list-style-type: none"> <li>• Sections 7.20 and 7.21.</li> <li>• Figures 40 &amp; 41</li> </ul>
UK/0126/0126 Revision 11	15 May 2017	<u>Revision 11 Issued:</u> Addition of: <ul style="list-style-type: none"> <li>• UK implementing regulations to front page</li> <li>• Sections 7.22 and 7.23.</li> <li>• Figures 42 &amp; 43</li> </ul>
UK/0126/0126 Revision 12	04 July 2017	<u>Revision 12 Issued:</u> Addition of: <ul style="list-style-type: none"> <li>• UK implementing regulations to Section 1</li> <li>• Sections 7.24 and 7.25.</li> <li>• Figures 44 &amp; 45</li> </ul>
UK/0126/0126 Revision 13	29 September 2017	<u>Revision 13 Issued:</u> Addition of: <ul style="list-style-type: none"> <li>• Sections 7.26 and 7.27.</li> <li>• Figures 46 &amp; 47</li> </ul>
UK/0126/0126 Revision 14	23 November 2017	<u>Revision 14 Issued:</u> Addition of: <ul style="list-style-type: none"> <li>• Section 7.28</li> <li>• Figure 48.</li> </ul>
UK/0126/0126 Revision 15	05 March 2018	<u>Revision 15 Issued:</u> Addition of: <ul style="list-style-type: none"> <li>• Sections 7.29 and 7.30</li> <li>• Figures 49 and 50.</li> </ul>
UK/0126/0126 Revision 16	08 March 2018	<u>Revision 16 Issued:</u> Addition of: <ul style="list-style-type: none"> <li>• Sections 7.31</li> <li>• Figure 51</li> </ul>
UK/0126/0126 Revision 17	06 June 2018	<u>Revision 17 Issued:</u> Addition of: <ul style="list-style-type: none"> <li>• Sections 7.32 and 7.33</li> <li>• Figures 52 and 53</li> </ul>



Figure 1: Examples of the steel blade



Figure 2: Examples of the Case

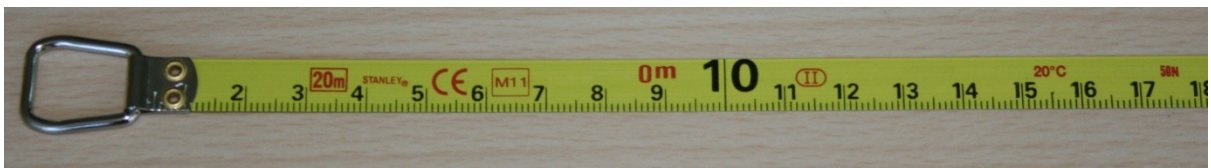


Figure 3: Examples of the alternative steel blade



Figure 4: Examples of Case Model closed reel



Figure 5: Examples of Case Model FatMax



Figure 6: Example of the fiberglass tape & hook end



Figure 7: Examples of Case Model - closed case



Figure 8: Examples of Reel Model - open frame



Figure 9: Example of the alternative fiberglass tape with hook end and pull loop (19mm width)



Figure 10: Examples of Reel Model - Fat Max



Figure 11: Example of the alternative fibreglass tape with hook end and pull loop (12.7mm width)



Figure 12: Examples of Reel Model - Power Winder



Figure 13: Example of the Micro PowerLock alternative steel blade.



Figure 14: Examples of Case Model - Micro PowerLock

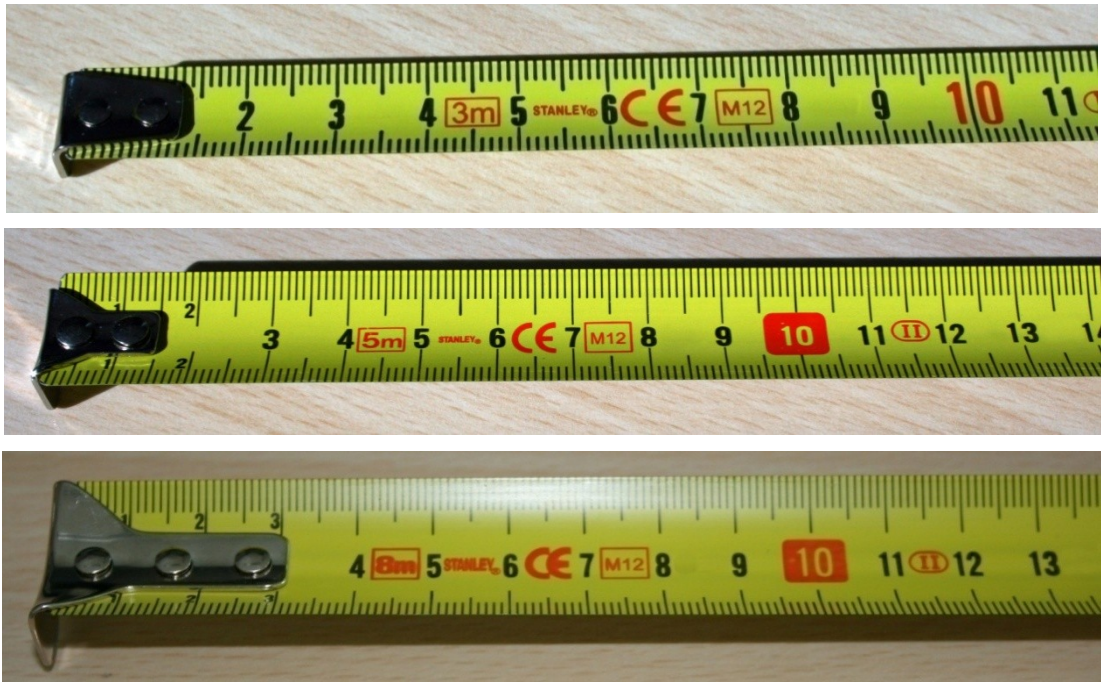


Figure 15 Examples of the Tylon alternative steel blade.



Figure 16 Examples of the Tylon case model.



Figure 17 Examples of the Max alternative steel blade.



Figure 18 Examples of the Max case model



Figure 19 Examples of the magnetic hook alternative steel blade.



Figure 20 Examples of the Max + Magnetic Hook case model.



Figure 21 Examples of the PowerLock / PowerLock CLASSIC alternative steel blades.



Figure 22 Examples of the PowerLock / PowerLock CLASSIC case models

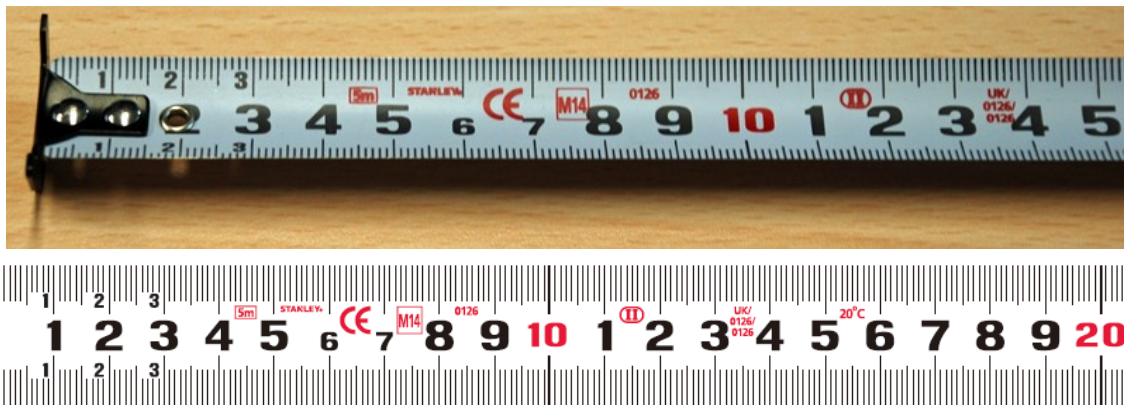


Figure 23 Example of the blades for Tough Cases (ABS) and (ABS+TPR)

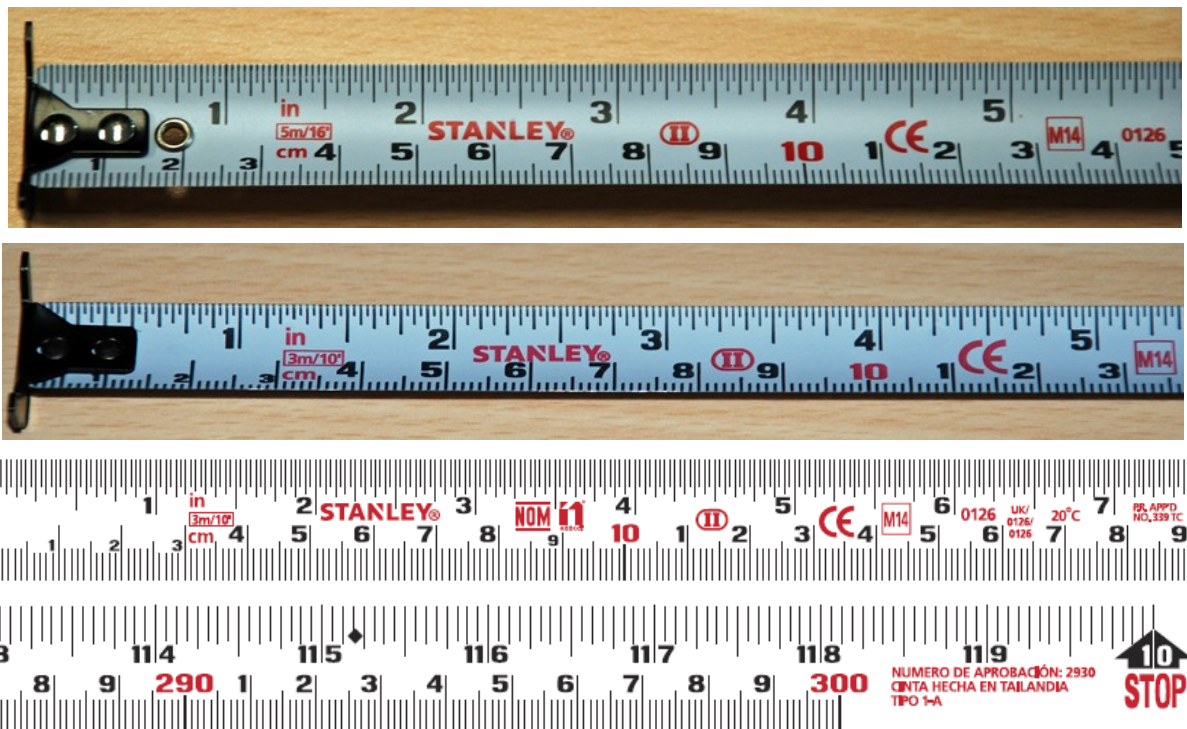


Figure 24 Example of the dual scale blades for Tough Cases (ABS) and (ABS+TPR)





Figure 25 Example of Tough Case (ABS)



Figure 26 Example of Tough Case (ABS+TPR)

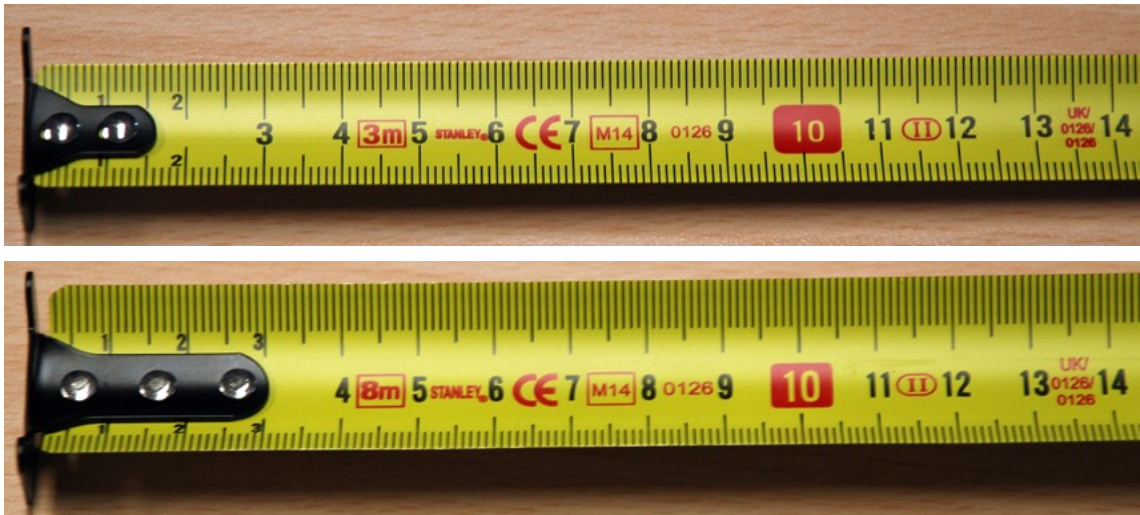


Figure 27 Example of blades for Grip style case



Figure 28 Example of case style GRIP

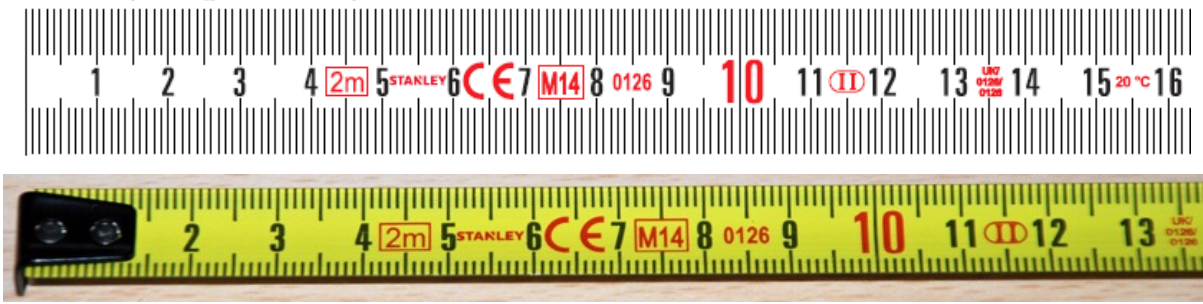


Figure 29 - Fatmax keychain blade



Figure 30 - case 33-856



Figure 31 Example of the dual scale blades for Global, Tylon, Power Lock, and Lever Lock



Global

Tylon

Power Lock

Lever Lock

Figure 32 Example of the dual scale case markings for Global, Tylon, Power Lock, and Lever Lock



Figure 33 Examples of alternative Fibreglass cases

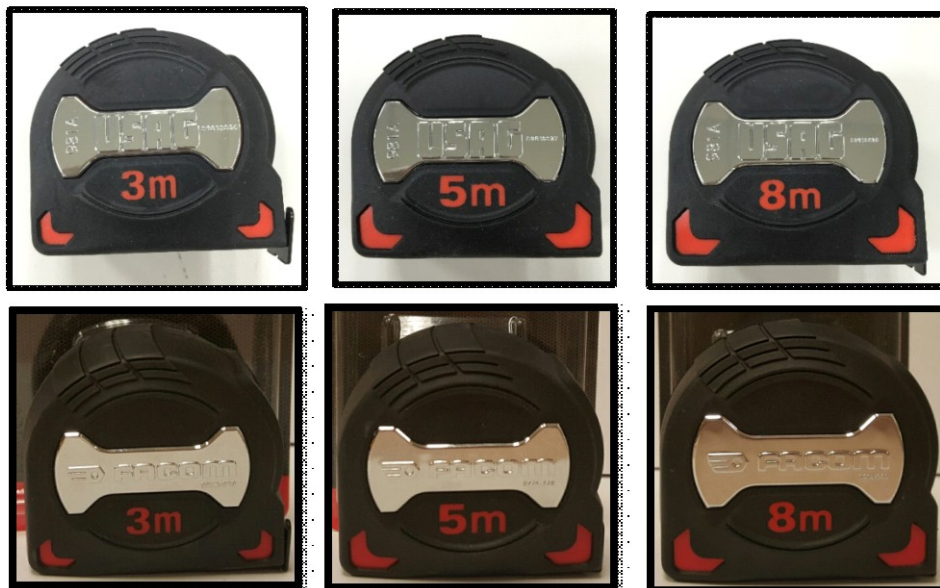
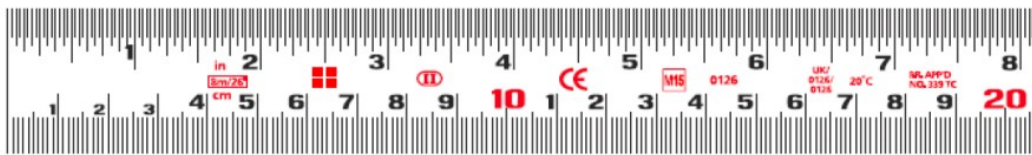
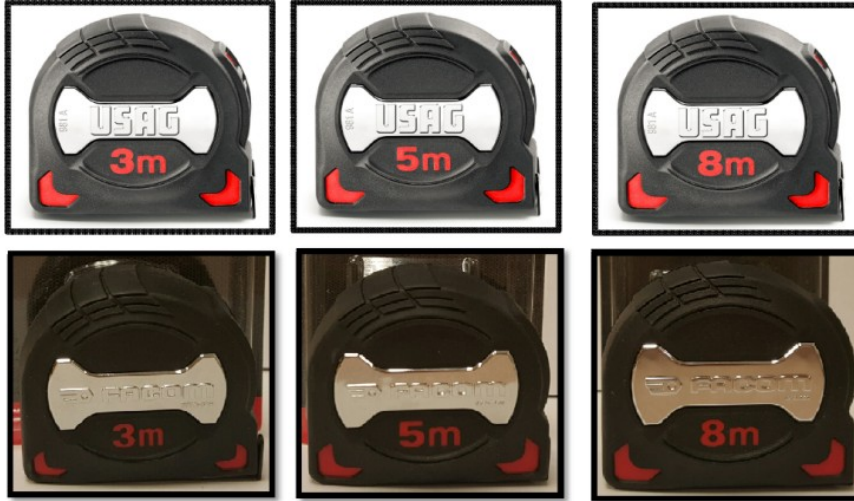
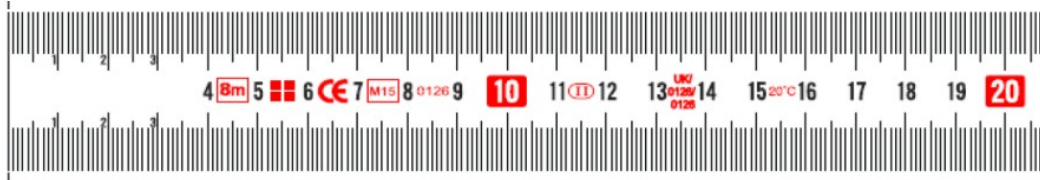


Figure 34 USAG and FACOM Examples

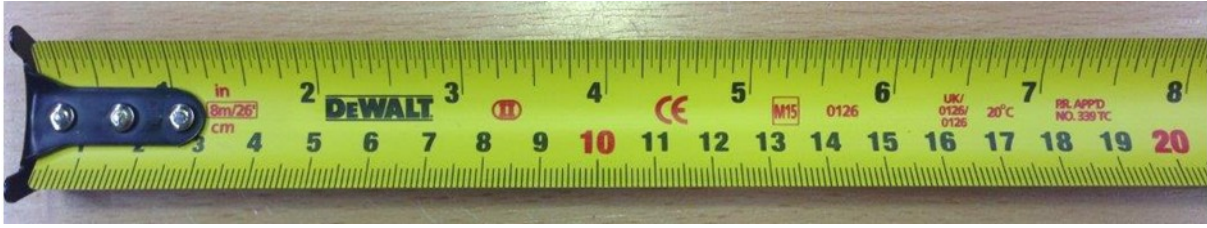
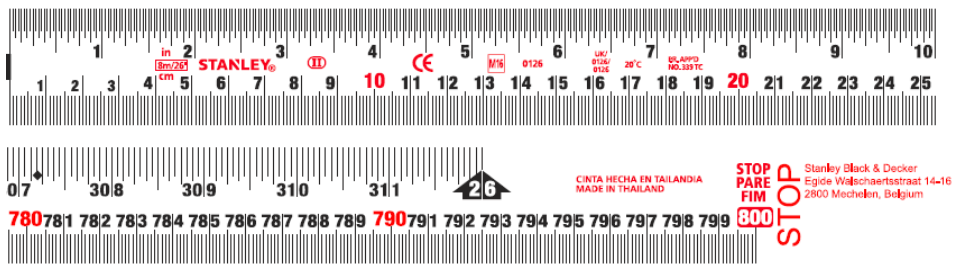
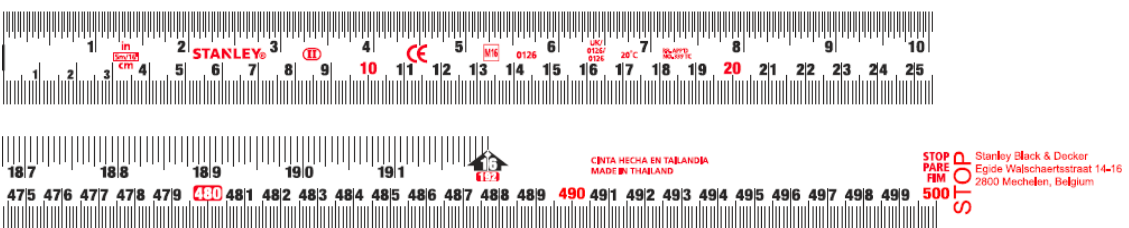


Figure 35 DeWalt Example

8 ME



5 ME



3 ME

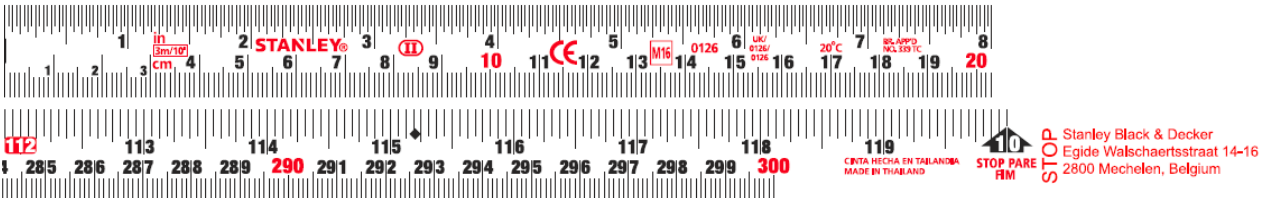


Figure 36 Revision 8 onwards Blade examples



Figure 37 Imperial markings with alternative manufacturer's mark



Figure 38 DeWalt case



Figure 39 Expert case

Front side



Back side



Figure 40 Example of Double sided blade



Figure 41 Example of Stanley Max case



Figure 42 Example of the FATMAX blade and case (Metric)



Figure 43 Example of the FATMAX blade and case (Metric/Imperial)





Figure 44 Examples of the Dual Lock blade and case (Metric)



Figure 45 Examples of the Dual Lock blade and case (Metric/Imperial)



Figure 46 Example of the Dewalt marked blade



Figure 47 Example of the Stanley dual sided blade



Figure 48 DeWalt example (5m)



Figure 49 Examples of the FACOM case and blade marking (3m)



Figure 50 Example of STANLEY SW case and blade marking (3m)





Figure 51 Example of STANLEY FATMAX AUTOLOCK case and blade marking



Figure 52 Examples of STANLEY FATMAX TAPE case and blade marking (10m/33ft and 10m)



Figure 53 Examples of STANLEY TAPE MAGNETICX case