

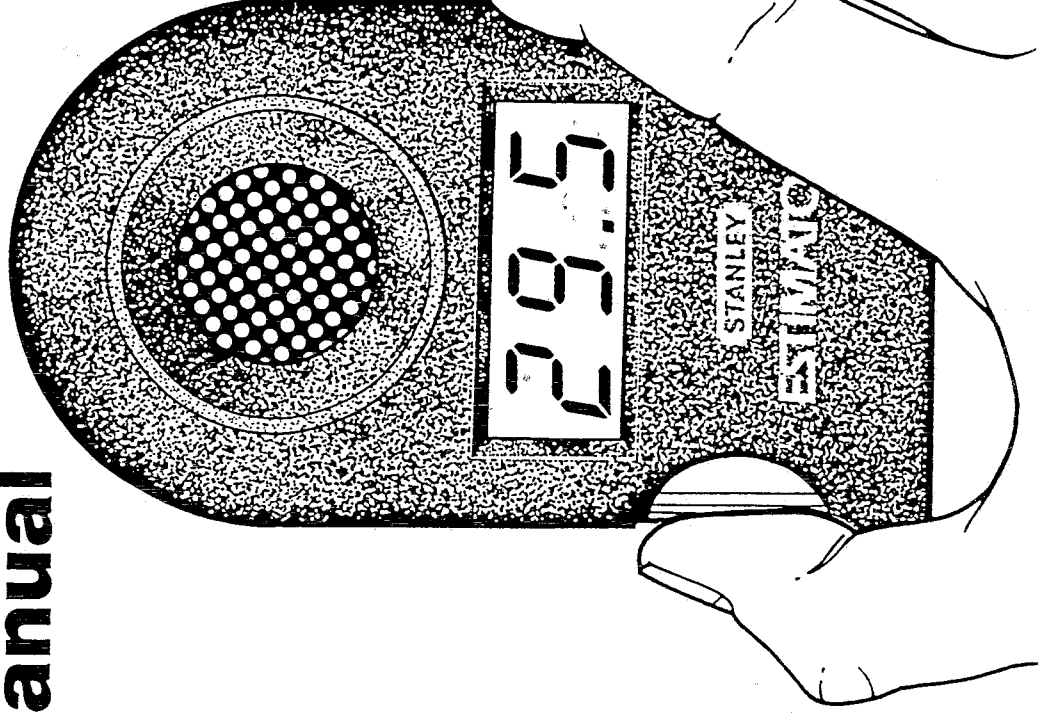
**STANLEY**®

39-030

# ESTIMATOR™

ULTRASONIC MEASURING TOOL

## Owner's Manual



### SPECIFICATIONS

Range	2 feet to 30 feet
Accuracy	99% at 30 feet; display rounds to nearest 1/10 foot
Operating Temperature	40 degrees F (4 C) to 105 degrees F (40 C)
Size	4.8 inches x 2.7 inches x 1.0 inch
Weight	6 ounces
Readout Indicators	Linear distance, error (E), or low battery (L)

*Discontinued 1989*

### LIMITED ONE YEAR WARRANTY

Stanley Tools warrants this product to the original retail purchaser for one year from the date of purchase against any defects that are due to faulty material (including batteries) or workmanship. In order to obtain warranty service return the complete unit to the participating retailer for free replacement or simply ship the unit, transportation prepaid, along with a copy of proof of purchase to Estimator Service Center, 1133 Route 23, Wayne, NJ 07470 for free replacement or repair at Stanley Tools' option.

There are no user-serviceable parts on this tool. This warranty does not apply where repairs have been made or attempted by anyone other than the warranty service center, where the tool has been abused, misused or improperly maintained, where alterations have been made to the tool, or where repairs are required because of normal wear.

If a low power indication (L) appears in the display during the 2nd through the 5th year after date of purchase, the unit may be returned and for a \$4.00 fee the batteries will be replaced.

**THIS WARRANTY IS IN LIEU OF ALL OTHER EXPRESS WARRANTIES. ANY WARRANTY OF MERCHANTABILITY OR FITNESS FOR A PARTICULAR PURPOSE IS LIMITED TO THE DURATION OF THIS WARRANTY.**

**IN NO EVENT SHALL STANLEY TOOLS BE LIABLE FOR CONSEQUENTIAL DAMAGES.** Some states do not allow the exclusion or limitation of incidental or consequential damages, so the above limitation or exclusion may not apply to you. Some states do not allow limitations on how long an implied warranty lasts, so the above limitation may not apply to you. This warranty gives you specific legal rights, and you may also have other rights which vary from state to state.

*Measurement & Spectacles Inc.*

**STANLEY**®

## INTRODUCTION

The **STANLEY 39-030 ESTIMATOR™** Measuring Tool measures straight line distances from 2 feet to 30 feet. An advanced ultrasonic measuring system, it transmits harmless sound waves (beyond the range of human hearing) that bounce off the first major obstacle they hit. The ESTIMATOR™ Measuring Tool measures the time it takes the sound waves to bounce back to the unit and converts it to feet, rounded to the nearest tenth of a foot. The calculated distance appears in the unit's display window; a chart on the rear of the unit lets you convert tenths of a foot to inches.

## MAKING A MEASUREMENT

### Precautions

- Choose your measuring point so the sensor has a clear and perpendicular path to the opposite wall. Otherwise, the sound waves may bounce off an object and give you a false reading. To avoid this possibility, measure from the wall which has large objects (such as a couch) against it.

### NOTE

Since the sound waves spread out after being transmitted from the ESTIMATOR™ Measuring Tool, they are more likely to hit an object in a large room than a small one. Always check for a clear path between the ESTIMATOR™ Measuring Tool and the "target" wall. If in doubt, move slightly to one side and repeat the measurement.

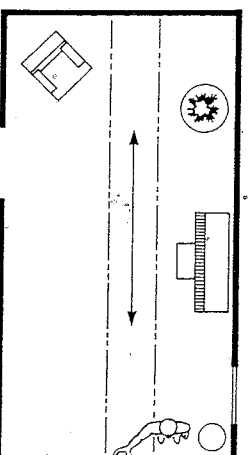
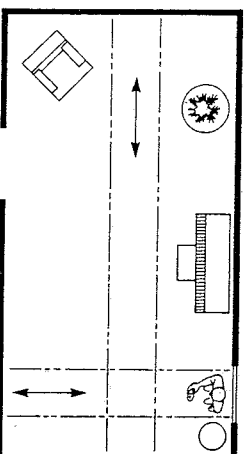
- Soft materials, such as drapes or curtains, can absorb sound waves and disturb your measurement. Open curtains before taking a measurement towards a window. Keep window closed.
- Loud noises can interfere with the sound waves and may produce an inaccurate measurement. The area should be free of loud noises.
- When taking measurements where no solid wall exists (as in a building still under construction), tack a sheet of cardboard or similar hard material to the "target" wall.
- The ESTIMATOR™ Measuring Tool should be used at room temperature. Allow about 15 minutes for the unit to stabilize after it has been exposed to a temperature greatly different from that in the rooms to be measured.

## Using the ESTIMATOR™ Measuring Tool

1. Hold the unit against the wall, about halfway between the floor and ceiling. Be sure the unit is *flat against the wall*, so it is parallel to the opposite wall. Be sure your head or hands do not block the ESTIMATOR™ Measuring Tool's sonic sensor screen.
2. To make your measurement, depress either the right or left side button momentarily and *then release it*.
3. As soon as the unit beeps, (in about five seconds) you can read the measurement in the display window. It will remain visible for approximately 20 seconds.
4. To take another measurement, repeat the above steps. New measurements can be taken before the display of the previous measurement disappears; you do not have to wait until the display window is blank.

## HELPFUL HINTS

- The unit's range is 2 feet to 30 feet. Under 2 feet an inaccurate measurement will occur, above 30 feet the letter **E** (error) will be displayed.
- To measure a room larger than 30 feet, pick a point in the middle of the room, take a reading toward each wall, and add the two figures together.
- When taking measurements for a real estate listing, accuracy is imperative. To measure wall-to-wall in rooms with built-in cabinets, bookshelves, etc., use the ESTIMATOR™ Measuring Tool to measure the room from the built-in item to the opposite wall. Then use a tape measure to measure the depth of the item, and add the two figures together.
- If no reading is obtained, the side switches may still be depressed. Engage these buttons only momentarily, then release.



1. Determine the clearest paths to take measurements. Open curtains before taking a measurement towards a window. Keep window closed.

2. With unit held flat against the wall about one half the distance between floor and ceiling, momentarily depress either right or left side button, then release it.

## CARE

- CLEAN THE UNIT BY WIPING IT WITH A CLEAN, DAMP CLOTH.
- DO NOT SUBMERGE UNIT.
- DO NOT USE ABRASIVE OR CLEANING SOLVENTS.
- DO NOT DROP THE UNIT OR EXPOSE IT TO SHOCK.
- DO NOT EXPOSE THE UNIT TO EXCESSIVE MOISTURE.

## THE POWER SOURCE

The ESTIMATOR™ Measuring Tool comes equipped with two permanently installed lithium coin cell batteries. Although these batteries give many years of service without requiring attention, battery power may eventually run down. If this occurs, the display will show the letter **L**, indicating the unit should be returned to Stanley for service. **DO NOT ATTEMPT TO REPLACE THE BATTERIES: RETURN THE UNIT TO STANLEY TOOLS FOR BATTERY REPLACEMENT. SEE LIMITED WARRANTY FOR DETAILS.**

**STANLEY**