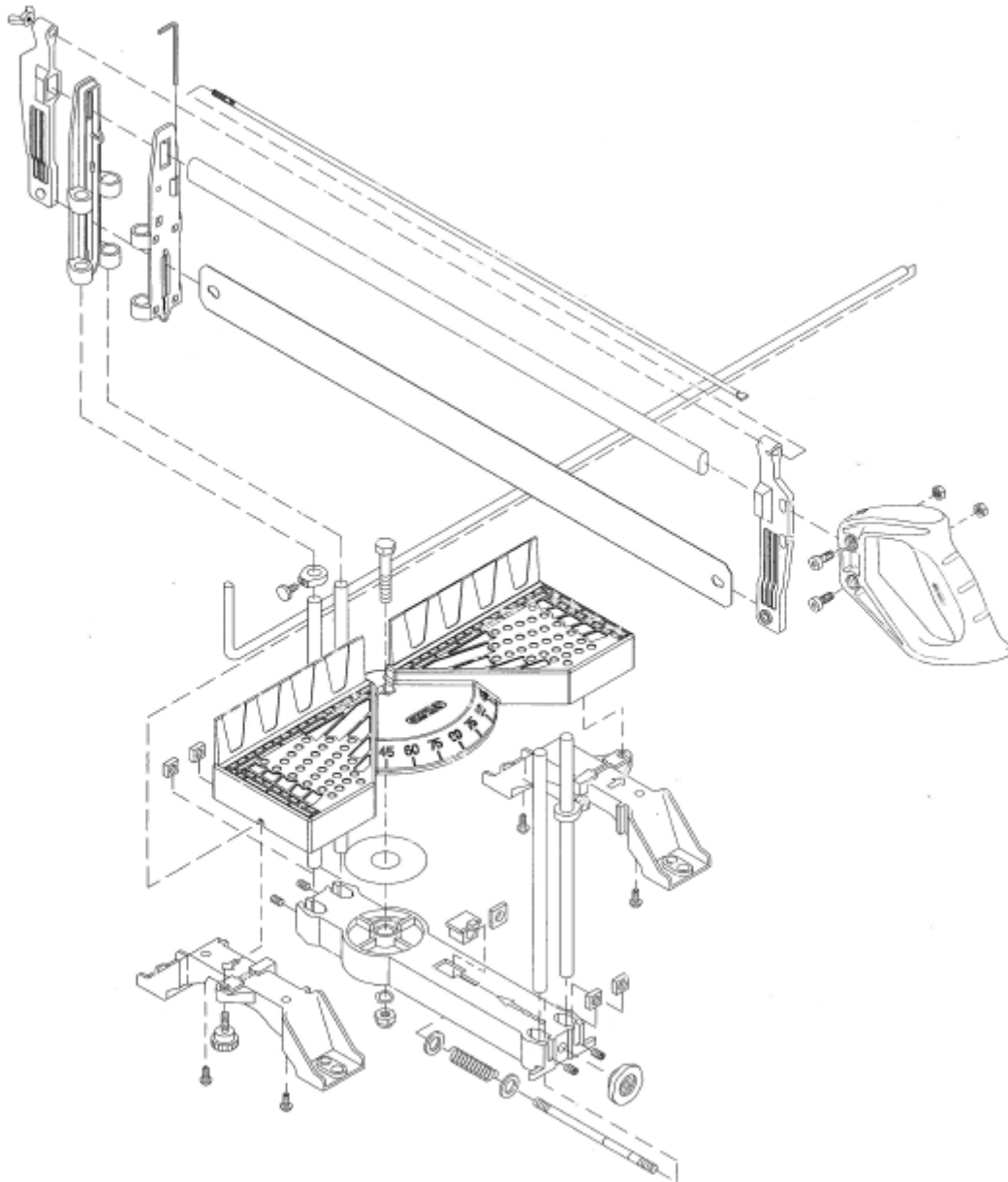


DIAGRAM OF PARTS



Wear Safety Goggles

Made in Taiwan

©2000 THE STANLEY WORKS

New Britain, CT 06053 U.S.A.

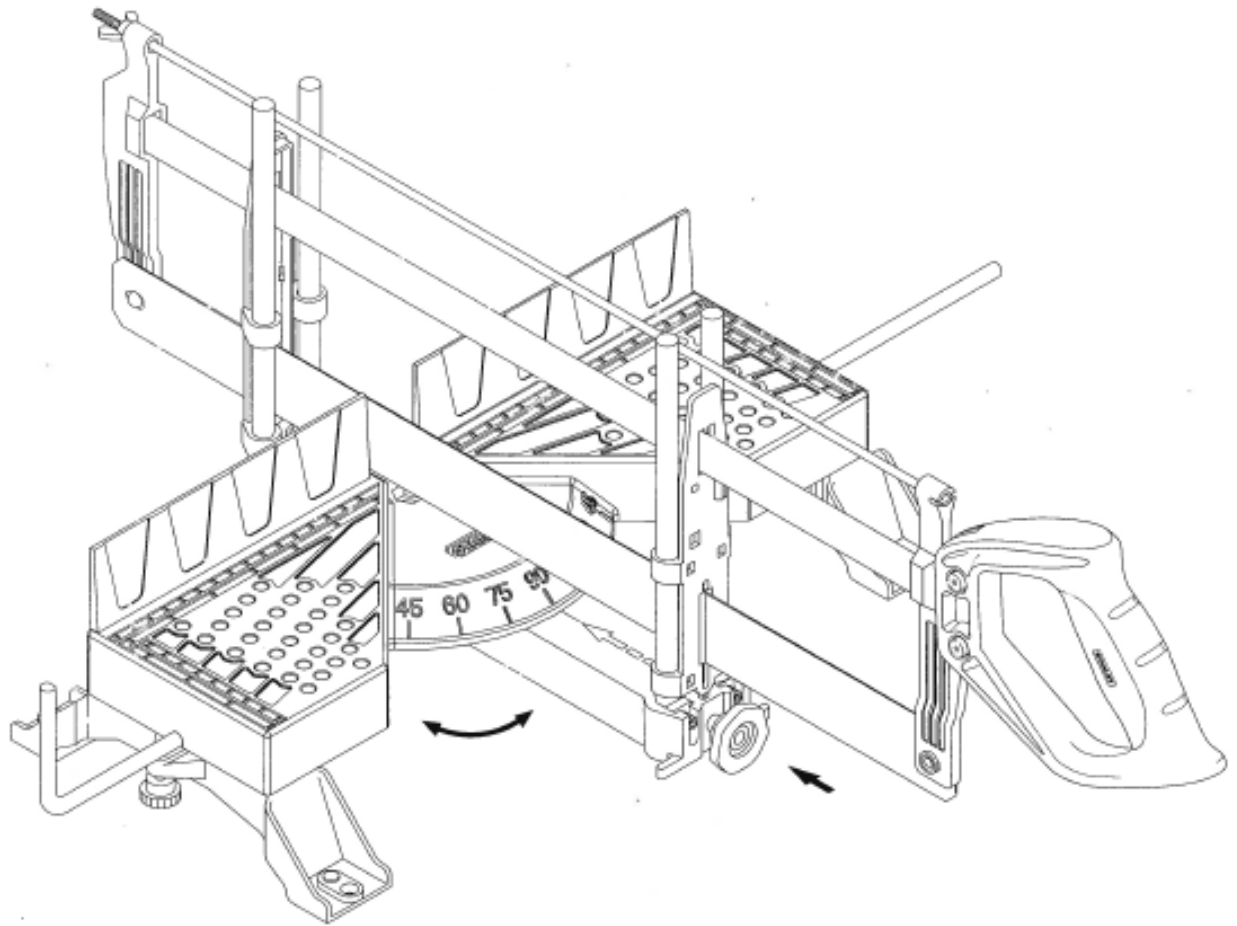
www.stanleyworks.com

USA Customer Service:

1800-262-2161

STANLEY

Precision Mitre Box & Saw



SPECIFICATIONS	
Blade Length	22" (560 mm)
Blade Width	1-1/2" (40 mm)
Max. Cutting Width at 45°	4-1/16" (103 mm)
Max. Cutting Width at 90°	6-1/2" (165 mm)
Max. Cutting Height	4-1/2" (114 mm)

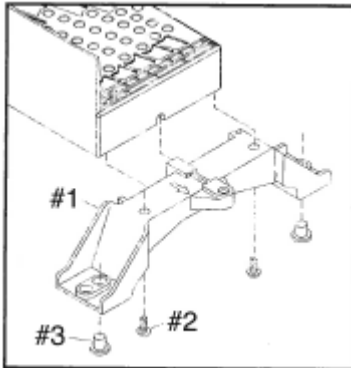


Wear Safety Goggles

STANLEY

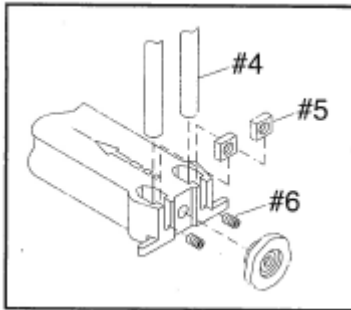
HOW TO ASSEMBLE

Please Read These Instructions Thoroughly Before Use.



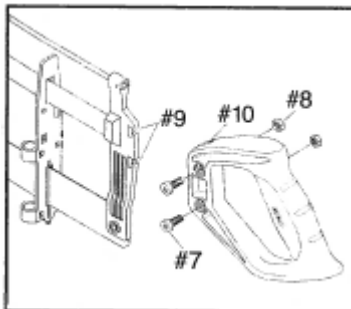
Step 1:

Align each foot #1 to the base with the arrow on the top of the foot pointing toward the out side of the base. Screw each foot to the base using two, #2 screws. Insert two, #3 anti-slip plugs into the inside holes of the feet.



Step 2:

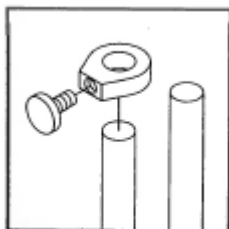
Insert the four #4 Guide Rods at both ends of the swivel arm. Put the square nuts #5 into the slots which are in front of Guide Rod slots. Fasten a set-screw #6 into the square nut and tighten.



Step 3:

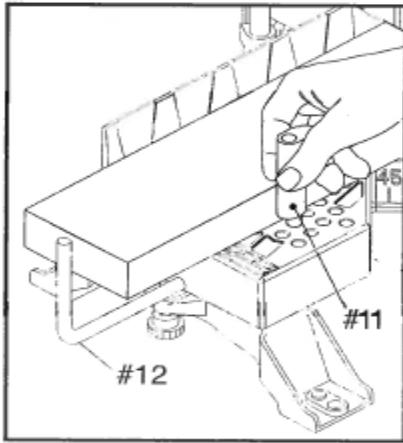
Insert two #7 screws and two #8 nuts loosely into handle as shown. The handle #10 is then placed into the slot of the blade assembly #9. Tighten screws onto blade assembly.

HOW TO USE



The Depth Stops permit adjustment to any desired cutting depth within capacity. Lower the stops completely to the bottom of the Guide Rods when cutting a workpiece into two pieces.

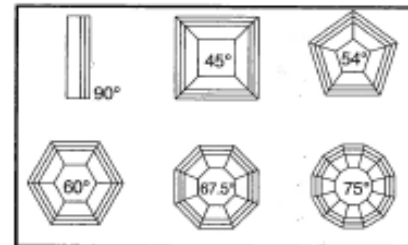
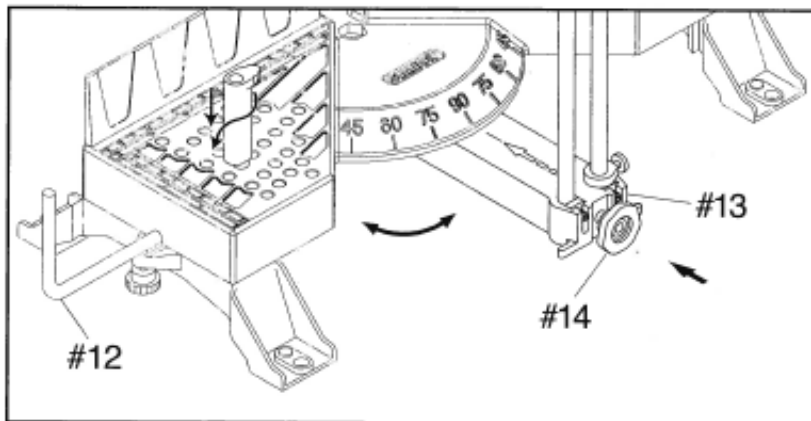
HOW TO USE



#11 To hold the workpiece onto the Base place the Cam Pins into the appropriate hole next to the workpiece on both sides of the base. Push the Cam Pin into the slot while turning 1/4 revolution to secure the workpiece to the base. It is advisable to clamp the workpiece firmly to avoid damage when cutting.

#12 Length Stop is used when you need to cut several pieces of the same length.

One - Touch angle adjustment is operated by relaxing index finger beside #13 Blade Guide Column and pushing the #14 Knob with thumb at the same time, thus the swivel arm will move freely from side to side. There are six Pre-set positions per side. (90°, 45°, 54°, 60°, 67.5°, 75°).



WARNING

1. Ensure saw blade is tensioned sufficiently and correctly secured to avoid "whip" which will cause the blade to deviate from a true cut.
2. Tension should always be released after use.
3. Use only the correct type of blade for your cutting needs.
4. Only use on a flat, stable working surface.
5. Always wear gloves and safety glasses when operating.
6. During cutting, be sure not to place your finger under the cutting blades.
7. Sawing chips shall be cleaned off with vacuum cleaner or hair brush.



Wear Safety Goggles