

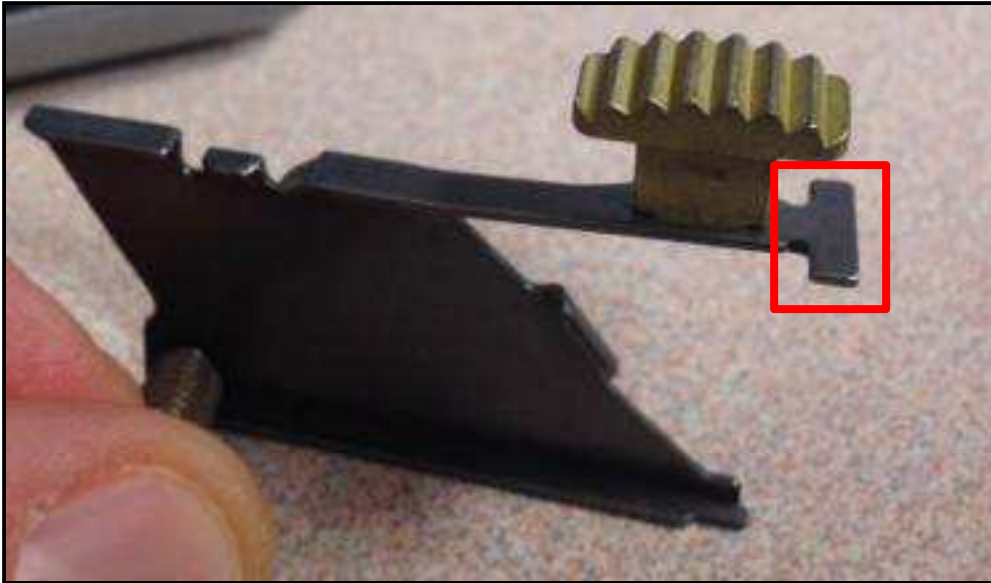


- Unscrew to start change blade

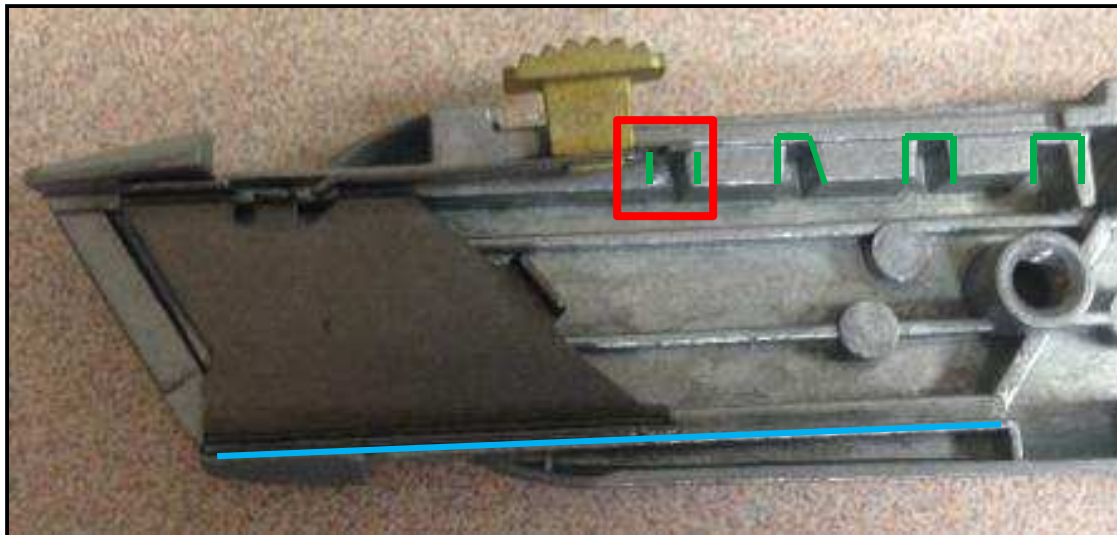


- Exploded view with component names

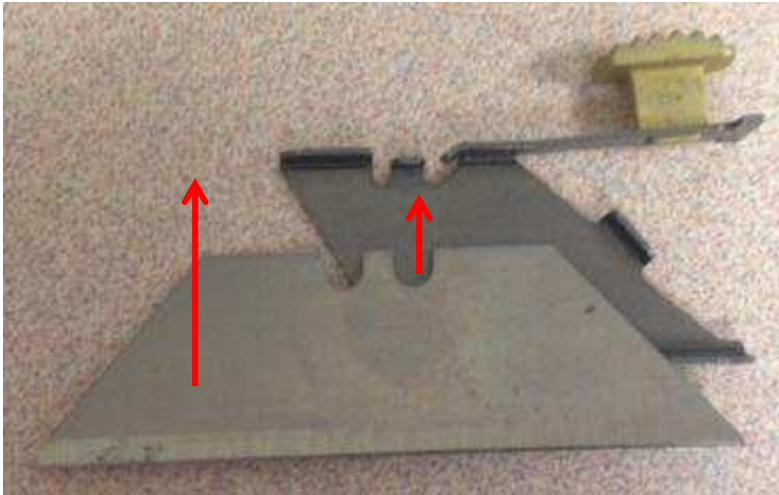
- Left Casting
- Right Casting
- Slider
- Screw
- Blade (x3)



- To place the slider into the knife, you must align the slider tab (highlighted in red) into one of the four notches in the casting (outlined in green).



- The bottom of the slider will rest on a platform in the casting (blue line)



- To place the blade into the slider, you must align the back notch on the blade with the tab in the middle of the slider.

- Insert the blade in a south-to-north direction as pictured at left and the blade will fall into place.



- This can be done with the slider in the knife, or separate (as pictured).





- Image with blade in the slider, and the slider in the knife.



- To close, slide the nose of the left casting on to the right casting at a angle, and the two castings will align themselves.



- Tighten the screw to complete the blade change process.