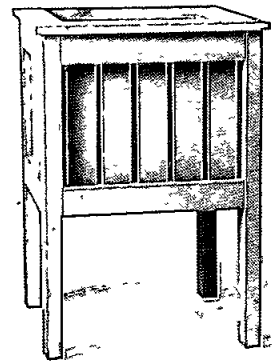


Litchfield loveseat



Galway bench/table



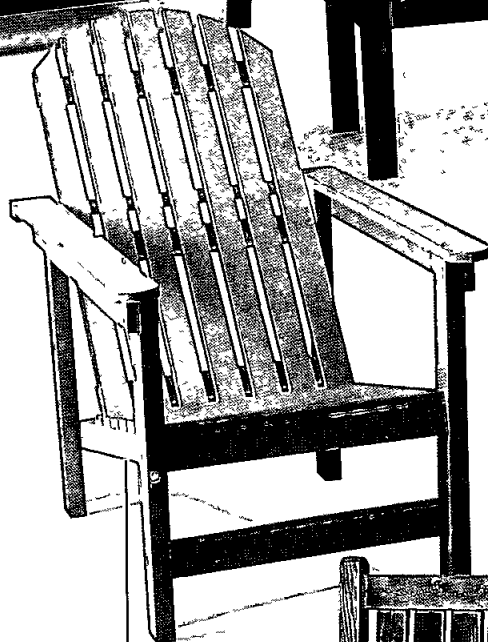
Litchfield planter box

The Stanley gazebo: a beautiful retreat.

Build it yourself, this place to get away from it all Or for the kids to play in some rainy day Or the spot you'll enjoy for family cookouts and entertaining - day or evening And what a nice architectural accent for your yard!

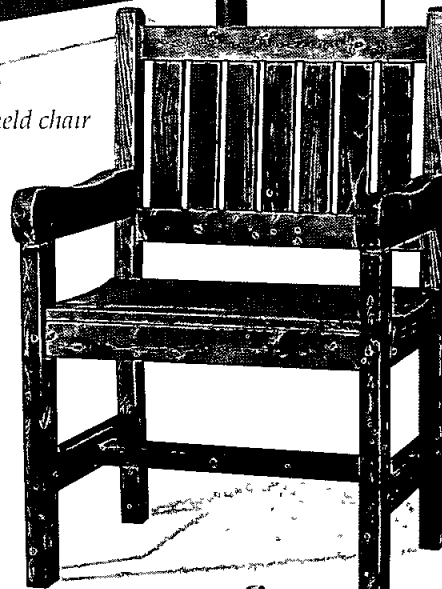
Constructing this gazebo gives you a chance to show off your skills at rough framing and finish carpentry A touch of cabinetwork, roofing and painting are also called for

Sure, the gazebo's a sizeable undertaking Besides real woodworking savvy, it calls for some extra help to assemble it But the instructions, enclosed here, do show you how to build it step by step Then all you need are tools and hardware from Stanley, The Do-It-Yourself Company



Litchfield chair

Litchfield bench/table



Galway chair

The Litchfield and the Galway lawn furniture.

Relax. This specially designed outdoor furniture is easy to build yourself Easy to look at Easy to enjoy for years

You'll find Stanley plans and drawings, tucked inside, with "how-to's" for the Litchfield furniture, which is quite easy to build And for the Galway furniture, which takes somewhat more skill to construct

One special feature of the Litchfield chair and loveseat, you'll notice, is that the backrests are removable This makes them easier to store since they take less space When the backrests are in place, of course, they offer solid "we're-not-going-anywhere" comfort

All the wood you'll need to build these projects is listed in these plans, as are the Stanley tools and Stanley hardware Go to it Have fun!



6-sided, 8-foot diameter, 70 square foot Gazebo

Galway loveseat



Materials

Part	Size*	No. Required
A leg	2 x 3 25 ³ / ₄ "	4
B front-back seat frame	2 x 3 21"	2
C front bottom stretcher	2 x 3 21"	1
D side seat frame	2 x 3 26 ¹ / ₄ "	2
E chamfer brace	1 x 3 30"	2
F backrest support	1 x 3 28"	1
G backrest slat	1 x 3 36"	7
H backrest brace	1 x 3 20 ⁵ / ₈ "	3
I seat bottom slat	1 x 3 21"	8
J arm rest	1 x 4 34"	2

*Note: These are nominal measurements. A 2 x 3 is actually 1¹/₂ x 2¹/₂, a 1 x 3 is actually ³/₄ x 2¹/₂, and a 1 x 4 is actually ³/₄ x 3¹/₂.

Tools

Mallet
Chisel
Try square
Crosscut saw
Cordless drill or bit & brace
Power bore bits
Screw Mate® for #8 screws
Cordless or regular screwdriver
Block plane
Framing square
Surform® tool or wood file
Claw hammer
Coping saw
Tape measure
Mitre box

Hardware

1¹/₂" #8 galvanized screws
3" #8 galvanized screws
1¹/₄" #8 galvanized screws (bugle head or sheet rock)
Sandpaper #80 and #100 grit
Paint or stain

Directions

Chair Frame

The best tool to use for all cuts is a mitre box for square cuts.

Cut four (4) legs from 2 x 3 - 25³/₄" long.

Cut two (2) braces 30" long from 1 x 3 and chamfer both ends. Use block plane or Surform tool. (See detail #1.)

Attach two legs to each brace with two (2) #8 1¹/₄" galvanized screws on each end. You will have two three-sided leg sections. (See Drawing #1.)

Always put screws into wood at diagonal angles to avoid splitting. Counter sink all screws so heads are flush with wood surface.

Check for squareness. Cut two (2) arm rests 34" long from 1 x 4.

Cut backrest support 28" long from 1 x 3.

Attach backrest support to arm rests from under side. Turn the arm rest pieces upside down - use two (2) #8 1¹/₄" galvanized screws on each side. (See Drawing #1.)

Attach leg units to arm unit with #8 1¹/₂" screws, three (3) on each side, one in each leg and one in the center of each brace, from the top. Legs fit flush to inside of arm unit. Note: distance between legs is 21".

Cut two (2) 21" and two (2) 26¹/₄" pieces from 2 x 3 stock for seating frame.

The box frame for the seat is put together with two 3" #8 galvanized screws per corner.

Seating frame is attached to chair unit at an angle. The front top of seat is 15¹/₄" from ground and back top of seat frame is 8" from ground.

Attach with 3" #8 galvanized screws, one in each leg.

Attach front bottom stretcher 4¹/₂" up from

ground with 3" #8 galvanized screws, two per side.

Chair Back

Cut seven (7) pieces of 1 x 3 wood 36" long for backrest slats.

Pick out best face of each slat and chamfer long edges slightly to prevent splintering.

Line up the seven backrest slats - chamfered fronts facing down on table on workbench.

Cut three (3) pieces of 1 x 3 20⁵/₈" long for backrest braces.

Fit outside edges of each of the two end backrest slats flush with end edges of backrest braces. Measure and place the middle slat according to position diagrams of backrest braces and mark. Space the rest about 1/2" apart.

Attach bottom backrest brace 1" from bottom of backrest slats. Put one #8 1¹/₄" screw into each slat so you can adjust for straightness as you attach the rest of the slats.

Drill pilot holes in all three backrest braces - two, on a diagonal, per slat. (See Drawing #2.)

Measure up 15" from bottom of bottom backrest brace - place top of middle backrest brace at that mark. Again put only one screw into each slat.

Measure up 17" from bottom of middle backrest brace to the top of top backrest brace. Again attach with only one screw in each slat.

Check for squareness with framing square - put in rest of screws.

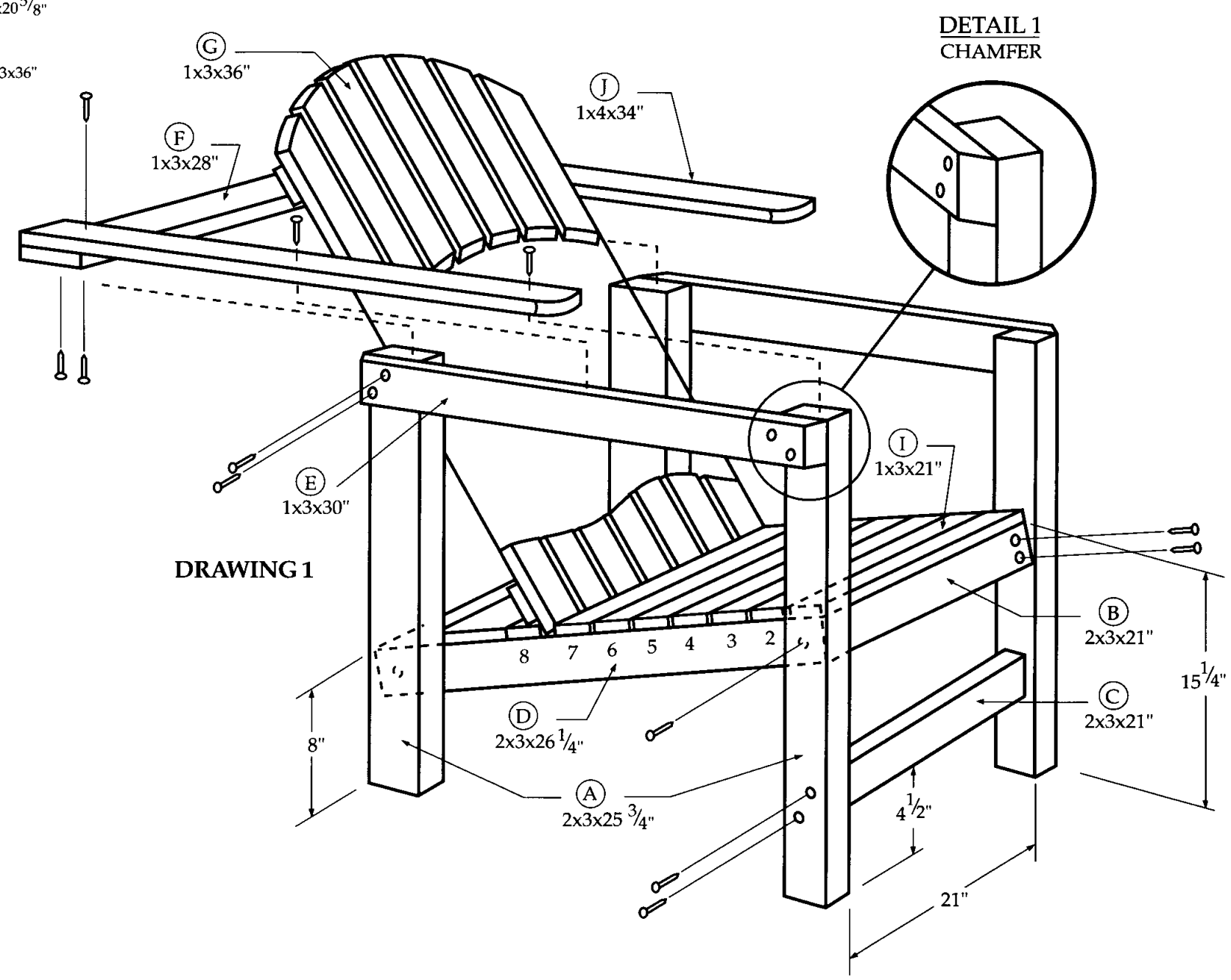
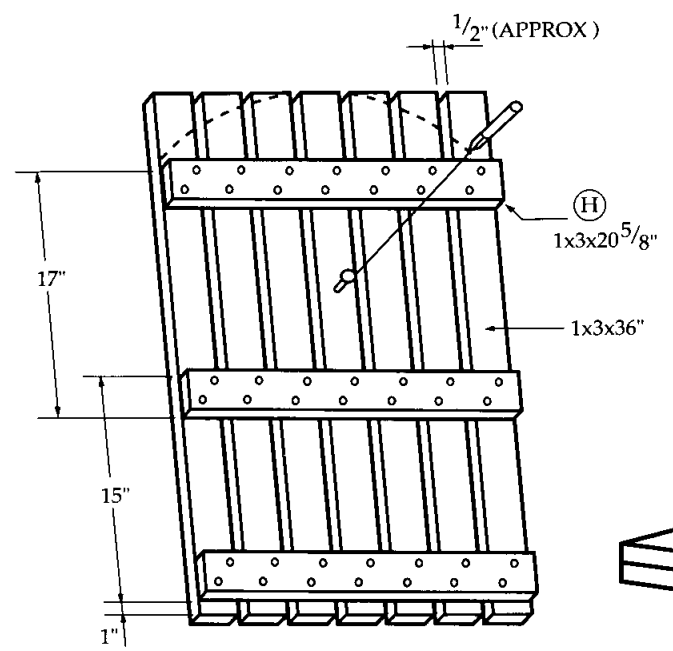
Make "compass" with string and pencil or nail and mark for back curve. Be sure arc clears backrest brace.

Do the rough cut with a coping saw. Clean up edges with a Surform tool or wood file.

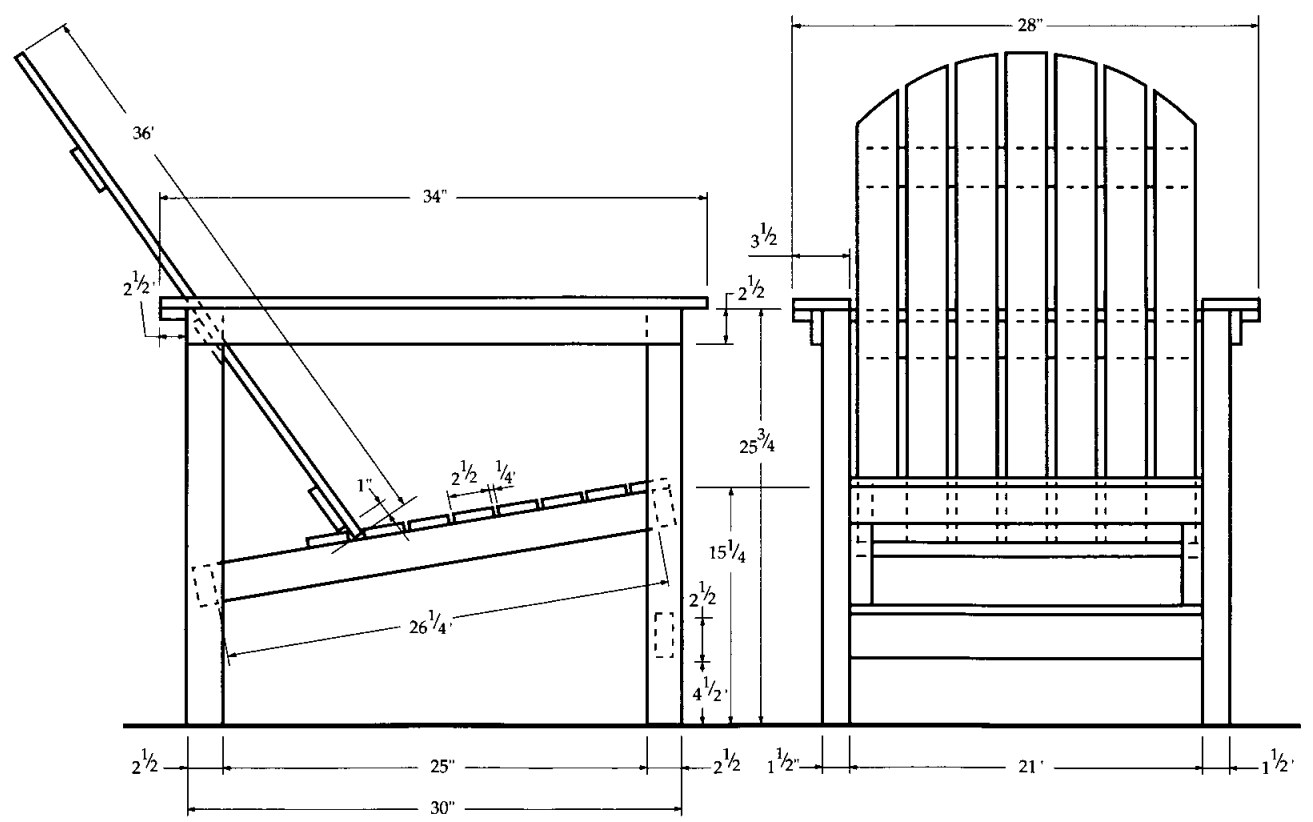
Seat Slats
 Cut eight (8) seat bottom slats 21" long from 1 x 3 stock.
 Pick out the best face for each piece and chamfer each long side slightly.
 Attach the first slat flush with the front of the seat frame with one (1) screw on each end
 Space the slats about 1/4" apart and repeat process on next six slats

Place the backrest into position to locate line for last slat to be attached. Mark and attach last slat (See Drawing #1)
 Round off front of arm rests with coping saw. Finish with sandpaper and paint

DRAWING 2
 BACK REST



DRAWING 1



SIDE ELEVATION

FRONT ELEVATION

Litchfield Loveseat

Dimension Differences

Materials

Part	Size*	No Required
A front-back seat frame**	2 x 3 45"	2
B front bottom stretcher	2 x 3 45"	1
C center seat support	2 x 3 26 ¹ / ₄ "	1
D backrest seat slat	1 x 3 36"	14
E middle-backrest seat slat	1 x 3 30"	1
F backrest brace	1 x 3 44 ¹ / ₂ "	3
G backrest support	1 x 3 52"	1
H seat bottom slat	1 x 3 45"	8

*Note These are nominal measurements A 2 x 3 is actually 1¹/₂ x 2¹/₂, a 1 x 3 is actually ³/₄ x 2¹/₂, and a 1 x 4 is actually ³/₄ x 3¹/₂

**Try to use pieces free of knots

