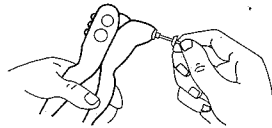


# STANLEY®

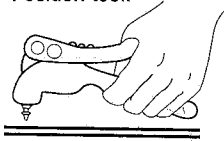
MR100CG

### INSTRUCTIONS:

1. Select nosepiece for 3/32", 1/8", 5/32", 3/16" or rivets.
2. Insert rivet into tool.



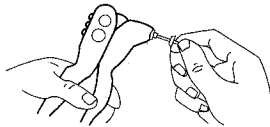
3. Position tool.



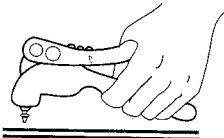
4. Squeeze handles.
5. Ejector spring will automatically eject rivet mandrel when handle is released.
6. Remove ejector spring for manual mandrel removal.

### INSTRUCCIONES:

1. Seleccione la boquilla correspondiente para remaches de 3/32", 1/8", 5/32", y 3/16".
2. Inserte el remache en la herramienta.



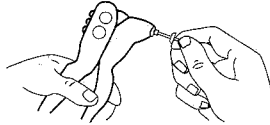
3. Posicione la herramienta.



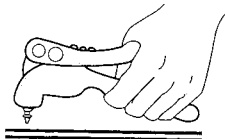
4. Presione ambas partes.
5. El resorte expulsor expulsara el clavo del remache en cuanto el mango es liberado.
6. Quite el resorte expulsor para remover mango es liberado.

### INSTRUCTIONS:

1. Choisissez à toutes les marques de rivets.
2. Insérez le rivet dans l'outil.



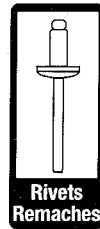
3. Positionnez l'outil.



4. Serrez les branches.
5. En relâchant la pression sur les branches de la riveteuse, un ressort d'éjection projette la queue du rivet.
6. Pour retrait manuel des queues de rivets, retirez le ressort d'éjection.

Uses: Usa: Utilise:  
3/32" (2mm)  
1/8" (3mm)  
5/32" (4mm)  
3/16" (5mm)

Aluminum/Aluminio/Aluminium  
Steel/Acero/Acier  
Stainless/Inoxidable/Inoxydable



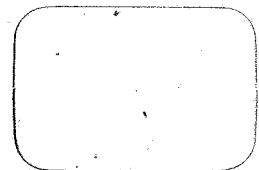
The operator and all persons in the work area must wear eye protection.

El operador y todas las personas en el área de trabajo deberán usar protección para los ojos.

L'utilisateur, ainsi que toutes les personnes dans la zone de travail doivent porter des lunettes de protection.

Made in Taiwan  
Fabricada en Taiwan  
Fabriquée en Taiwan

©2005 The Stanley Works  
New Britain, CT 06053 U.S.A.  
[www.stanleyworks.com](http://www.stanleyworks.com)



In Mexico Imported By: En Mexico Importado Por: Au Mexique Importé Par :  
Stanley Bostitch, S.A. de C.V.,  
Av. de Los Angeles No. 303  
Interior Local 1-C, Col. San Martin Xochinahuac, Delegación Azcapotzalco, Mexico, D.F., C.P.